



### Whitehall Bariatric On-Floor Toilet

Model 2125-A

Please visit [www.whitehallmfg.com](http://www.whitehallmfg.com)  
for most current specifications.



Fixture May Show Some Available Options

Fixture is arranged to be installed on a finished wall optionally from the front or rear. Unit is fabricated of 14 gage, type 304 stainless steel and is seamless welded construction. Fixture (less -HSBJ hinged seat option) shall withstand loads up to 2,000 lbs. with no measurable deflection and loads up to 5,000 lbs. with no permanent damage. Optional -HSBJ Big John® hinged toilet seat is rated at 1,200 lbs. Exterior has a satin finish with optional -EG Enviro-Glaze color finishes available. The inside of the toilet bowl has a matte finish. Housing includes side access panels to facilitate installation of fixture and hinged seat by others.

**Toilet** is optionally available in both Floor Outlet or Wall Outlet with elongated bowl with an overall depth of 29". Fixtures are manufactured to ANSI 112.19.2M requirements and require a minimum of 35 PSI flow pressure. Trap will pass a 2-1/8" ball and is fully enclosed with a minimum 3-1/2" seal.

**Wall Outlet** configurations with Front Mounting (-FM) include a wall waste outlet with a 5-1/2" diameter recessed gasket waste flange. Rear Mount (-RM) fixtures include a 2-3/8" plain end which extends 3" beyond fixture.

**Floor Outlet** configurations include a floor waste outlet with a 7-1/2" diameter recessed gasket waste flange for both Front (-FM) and Rear (-RM) mount installations.

**Flush Valve** supply is additionally available for exposed or concealed flush valve styles in 1.6 GPF or 3.5 GPF with 1-1/2" NPT connection.

#### GUIDE SPECIFICATION

Provide and install Whitehall Bariatric (specify model number and options). Fixture shall be fabricated from 14 gage, type 304 stainless steel. Construction shall be seamless welded and exposed surfaces shall have a satin finish. Toilet shall have an elongated bowl and a self-draining flushing rim and punched for seat by others. Toilet shall meet ANSI 112.19.2M requirements. Fully enclosed toilet trap shall have a minimum 3-1/2" seal that shall pass a 2-1/8" diameter ball.



# Whitehall Manufacturing

## Hospital-Ware

### WALL THICKNESS AND TYPE (Must Specify)

Thickness \_\_\_\_\_ Type \_\_\_\_\_

### MODEL NUMBER AND OPTIONS SELECTION SERIES (Must Specify)

- 2125A ADA Bariatric Toilet

### SUPPLY (Must Specify)

- T Top (Exposed)
- W Wall (Concealed)

### FIXTURE MOUNTING AND WASTE (Must Specify)

- 2 On-Floor, Wall Outlet
- 3 On-Floor, Floor Outlet

### INSTALLATION (Must Specify)

- FM Front Mount
- RM Rear Mount

### FLUSH VALVE GPF's (Must Specify)

- 1.6 GPF
- 3.5 GPF

### FLUSHING INLET LOCATION -Wall Supply (Must Specify)

- Flush Valve Left
- Flush Valve Right (Shown)

### FLUSH VALVE OPTIONS (Must Specify)

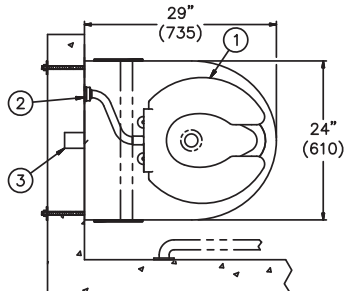
- Flush Valve by Others
- EVSFV Master-Trol Flush Valve (N/A for Top Supply)
- FVC Cover, Flush Valve (-Top Supply, N/A for ADA)
- FVCH Cover, Hydraulic Flush Valve (-Top Supply)
- FVH Flush Valve, Hydraulic (-Wall Supply)
- FVL Flush Valve, Lever Handle (-Top Supply)
- MVCFV Time-Trol Flush Valve (N/A for Top Supply)

### Product Options

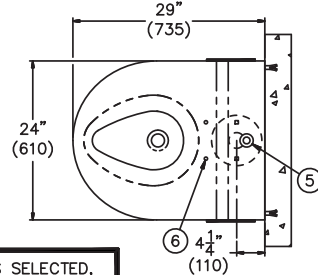
- BL Bedpan Lugs
- EG Enviro-Glaze Color Specify: \_\_\_\_\_
  - Exterior Only (Not Inside Bowl)
  - Exterior & Inside Bowl
- FT Flood-Trol (N/A w/ Top Supply)
- FTA Flood-Trol Auto Reset (N/A w/ Top Supply)
- FVT Flush Thru Wall Connector
- HSBJ Big John® Hinged Seat
  - 1,200 lbs Rated
  - Open Front Less Cover (Shown Below)
  - Open Front With Cover
- LPFS Less Punch for Hinged Seat
  - 17" Flood Rim AFF
- PE Plain End Toilet Waste (Standard on Rear Mount Units)
- PH Paper Holder (Available Only with -FVC and -FVCH)
- SFB Satin Finish Bowl
- TF Transformer (For MVCFV)
- TSC Toilet Shipping Cover
- VAC Acorn Vac System
- WO3 3" O.D. Waste P-Trap (3.5 GPF Only)
- WO3B 3" O.D. Bell Waste Connection

Please visit [www.whitehallmfg.com](http://www.whitehallmfg.com) for most current specifications.

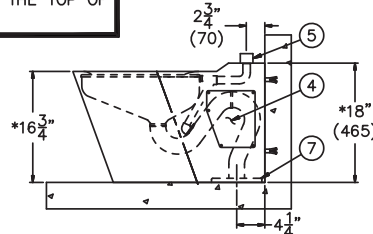
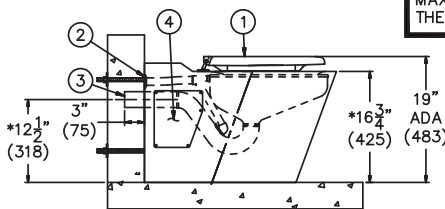
2125A-W-2-RM-FVR-HSBJ BLOWOUT JET



2125A-T-3-FM SIPHON JET



\*WHEN OPTIONAL -LPFS IS SELECTED, FLOOD RIM BECOMES 17" AFF. ADA REQUIRES A MINIMUM OF 17" TO 19" MAXIMUM MEASURED FROM THE TOP OF THE SEAT TO THE FLOOR.



- NOTE:
- OPTIONAL -HSBJ BIG JOHN HINGED SEAT SHOWN FOR REFERENCE.
  - FVR OFFSET FLUSHING INLET SHOWN FOR -W CONCEALED SUPPLY. -FVL IS OPPOSITE.
  - 2-3/8" PLAIN END WASTE OUTLET.

- LEFT AND RIGHT ACCESS PANELS.
- TOP SUPPLY -T SHOWN FOR REFERENCE.
- PUNCHING FOR HINGED SEAT.
- 7-1/2" GASKET WASTE OUTLET.

All dimensions are nominal and subject to manufacturer's change without notice. Whitehall assumes no responsibility for use of void or suspended data © 2007 Whitehall Manufacturing, A Division of Acorn Engineering Company. Please visit [www.whitehallmfg.com](http://www.whitehallmfg.com) for most current specifications.

### SELECTION SUMMARY & APPROVAL FOR MANUFACTURING

Model Number & Options \_\_\_\_\_ Quantity \_\_\_\_\_

Company \_\_\_\_\_ Date \_\_\_\_\_

Contact \_\_\_\_\_ Title \_\_\_\_\_

Approval for Manufacturing/Signature \_\_\_\_\_