



### Whitehall Free-Standing Swivette

Includes Models  
HW-4010, HW-4012, HW-4015

Please visit [www.whitehallmfg.com](http://www.whitehallmfg.com)  
for most current specifications.



HW-4010-L-1

Fixture May Show Some Available Options

**Cabinet** exterior surfaces are high pressure laminate. Interior surfaces are stain-resistant melamine laminate and stainless steel. Interior has a removable stainless steel floor to conceal frame anchors. Specify cabinet color selection.

**Counter** has a 3" backsplash and a bullnose front edge. Surface is high pressure laminate. Specify counter color selection.

**Lavatory** is heavy gage, type 304 stainless steel, self-rimmed, furnished with P-trap and wall flange. Lavatory is always located on the opposite side of the toilet.

**Lavatory Valve** is a deck-mounted, hot and cold mixing valve with wrist blade handles and a 10" rigid gooseneck.

**Toilet** is stainless steel, siphon jet type with white plastic seat and self-sustaining check hinge. Door linkage swivels the toilet into the room when cabinet door is opened. The toilet is locked in place when open and must be unlatched to close. Toilet operates with a 1.6 GPF flush valve.

**Hydraulic Flush Valve** is furnished standard with a 1-3/4" diameter, hydraulically actuated, remote pushbutton. Flush valve requires a minimum of 25 PSI flow pressure.

**Swivel Assembly** is cast iron with a sanitary white Enviro-Glaze finish, and has a positive watertight, chemical-resistant seal. Swivel assembly requires floor anchoring and will withstand a 2,500 pound static vertical load.

#### GUIDE SPECIFICATION

Provide and install Whitehall Swivette (specify model number and options). Cabinet frame shall be heliarc welded, type 304 stainless steel, and shall not require wall support. Cabinet doors and panels shall be high pressure laminate. Door on toilet side shall be linked to toilet, so that when door is opened or closed, the toilet will swivel accordingly. Door on lavatory side shall be provided with a toilet paper holder. Doors shall support a 250 pound static, vertical load. Front panels shall hinge open for access to valves and piping. Bedpan storage cupboard shall be provided above the toilet. Cabinet shall provide front toe space. Counter shall be high pressure laminate with a 3" backsplash and bullnose front. Lavatory bowl shall be heavy gage, type 304 stainless steel, self-rimmed, rectangular type, 9-1/2" x 14-1/2" x 6" deep. P-trap shall be furnished. Toilet shall be stainless steel, elongated, siphon jet type, and shall flush in any position along the arc of movement. Trap shall pass a 2-1/8" ball. Toilet shall withstand loadings of 2,500 pounds without permanent damage. Toilet seat shall have self-sustaining check hinge. Toilet to flush with a 1.6 GPF flush valve.



# Whitehall Manufacturing

## Hospital-Ware

### MODEL NUMBER AND OPTION SELECTIONS

#### BASE MODEL NUMBER (Must Specify)

- HW-4010, Free-Standing, Back Wall Waste Outlet
  - HW-4012, Free-Standing, Side Wall Waste Outlet
  - HW-4015, Free-Standing, Floor Waste Outlet
- Note: Side wall outlet is only available on the toilet side of fixture.

#### TOILET ORIENTATION (Must Specify)

- L Left Hand Toilet
- R Right Hand Toilet

**Notes:** Lavatory is always located on side opposite the toilet.  
L (left) or R (right) indicates toilet location in opened position when facing the fixture.

#### BACKSPLASH/CABINET ORIENTATION (Must Specify)

- 1 Back Wall Only (One Wall)
- 2 Right Hand Corner (Two Wall)
- 3 Left Hand Corner (Two Wall)
- 4 Alcove (Three Wall)

#### COLOR SELECTION (Must Specify)

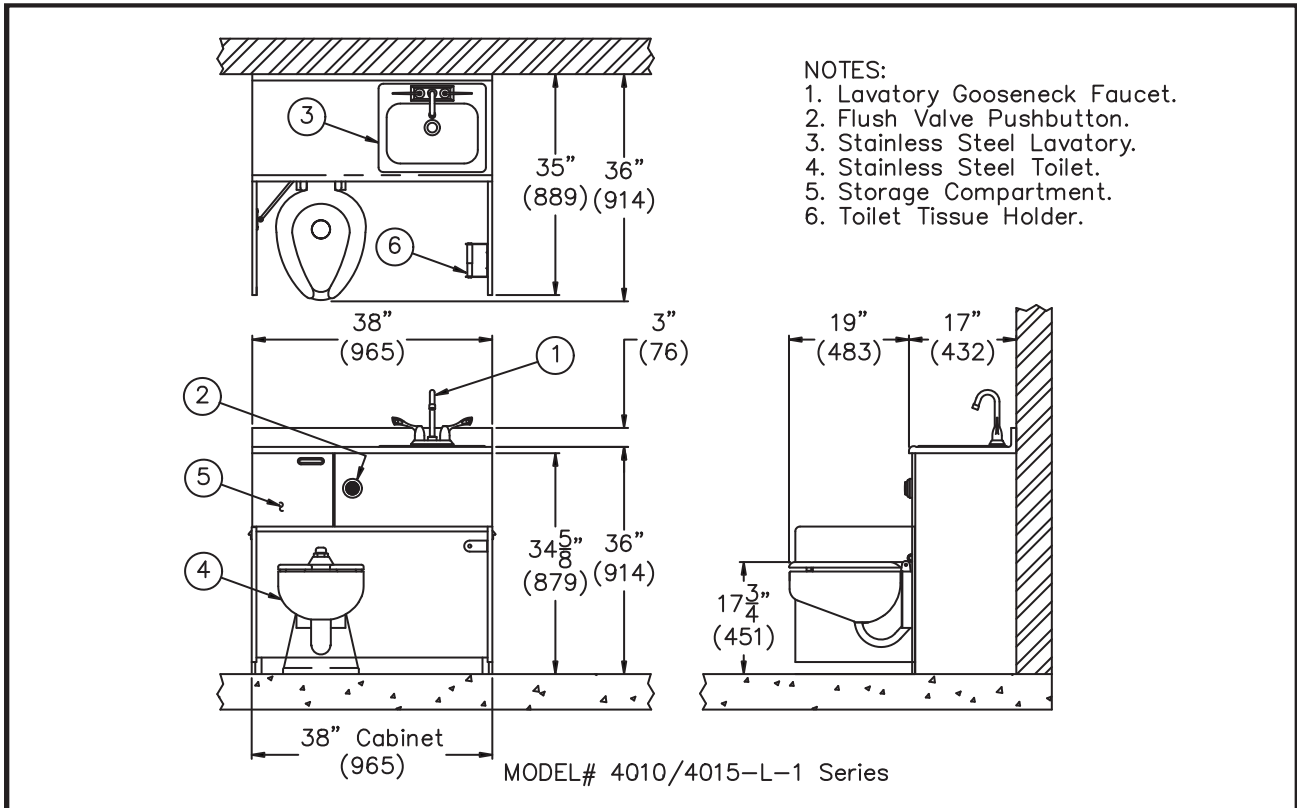
Countertop \_\_\_\_\_

Cabinet \_\_\_\_\_

#### Product Options

- AE Aerator (on Gooseneck Spout)
- BAT Battery Operated (-SO)
- BL Bedpan Lugs
- BW Bedpan Flusher (Built-In)
- CCT Corterra™ Countertop.  
Specify Color: \_\_\_\_\_
- CS Stainless Steel Countertop with  
Integral Lavatory
- DB Hemo-Dialysis Box  
(Built-In) \_\_\_ (1) Valve \_\_\_ (2) Valves
- EC Extended Countertop. Specify Length \_\_\_\_\_
- EG Enviro-Glaze \_\_\_ Lavatory \_\_\_ Toilet.  
Specify: \_\_\_\_\_
- EP Exposed Paper Holder
- LCT Less Countertop, Furnish Lavy and Valve
- LCTL Less Countertop and Lavy, Furnish Valve
- LCTV Less Countertop, Lavy and Valve
- LFN Laminar Flow Nozzle
- LS Lavatory Hose Spray
- MT Metal Template
- SO Sensor Operated Valve
- SS Storage Shelf
- SUG Swing Up Grab Bar
- VF Concealed H & C Foot Pedal  
Operated Air-Control Valve

Please visit [www.whitehallmfg.com](http://www.whitehallmfg.com) for most current specifications.



All dimensions are nominal and subject to manufacturer's change without notice. Whitehall assumes no responsibility for use of void or suspended data © 2004 Whitehall Manufacturing, A Division of Acorn Engineering Company. Please visit [www.whitehallmfg.com](http://www.whitehallmfg.com) for most current specifications.

#### SELECTION SUMMARY & APPROVAL FOR MANUFACTURING

Model Number & Options \_\_\_\_\_ Quantity \_\_\_\_\_  
 Company \_\_\_\_\_ Date \_\_\_\_\_  
 Contact \_\_\_\_\_ Title \_\_\_\_\_  
 Approval for Manufacturing/Signature \_\_\_\_\_