



Whitehall Surgical Scrub Sink Three Station

Model SS-3

Please visit www.whitehallmfg.com
for most current specifications.



Fixture May Show Some Available Options

Surgical Scrub Sink is designed for use in health care institutions providing surgeons with a convenient sink for pre-op scrub up.

Fixture is fabricated from heavy gage, type 304 stainless steel and is seamless welded construction polished to a satin finish. The cabinet interior is sound-deadened with a fire-resistant material. The unit is designed to be installed on the wall using a mounting carrier or it can be floor mounted on a stainless steel pedestal base.

Scrub Sinks are provided with front panels which are easily removed for access to the water control valves, waste connections, stops and strainers. Scrub sinks have a sloping bottom surface to minimize splashing and a 1-1/2" OD tailpiece with a 3" flat strainer drain.

Backsplash has a gooseneck assembly with a 1-1/2" sprayhead that can be removed for sterilization.

Thermostatic Mixing Valve Control is located on each control panel and maintains a constant water temperature. This easily adjustable, anti-scald valve will automatically shut off if the hot or cold water supply fails.

Water Supply Valves are mechanical pilot type, actuated by one push of a knee-operated front panel and turned off by a second push.

GUIDE SPECIFICATION

Provide Whitehall Three Station Surgical Scrub Sink (specify model number and options) 94" wide. Fixture shall be fabricated from heavy gage, type 304 stainless steel, with seamless welded construction polished to a satin finish. Cabinet interior shall have a sound deadening, fire-resistant material. Cabinet shall also have removable panels to allow access to water control valves, waste connections, stops and strainers. Sinks shall have a sloping bottom to minimize splashing, and a 3" flat strainer drain. Goosenecks shall have a removable 1-1/2" sprayhead. Fixture shall have thermostatic mixing valves which are easily adjustable at the control panels. Manufacturer shall provide necessary installation instructions.



MODEL NUMBER AND OPTION SELECTIONS

MODEL NUMBER AND OPTIONS SELECTION SERIES

○ -SS-3 Surgical Scrub Sink (3 Stations)

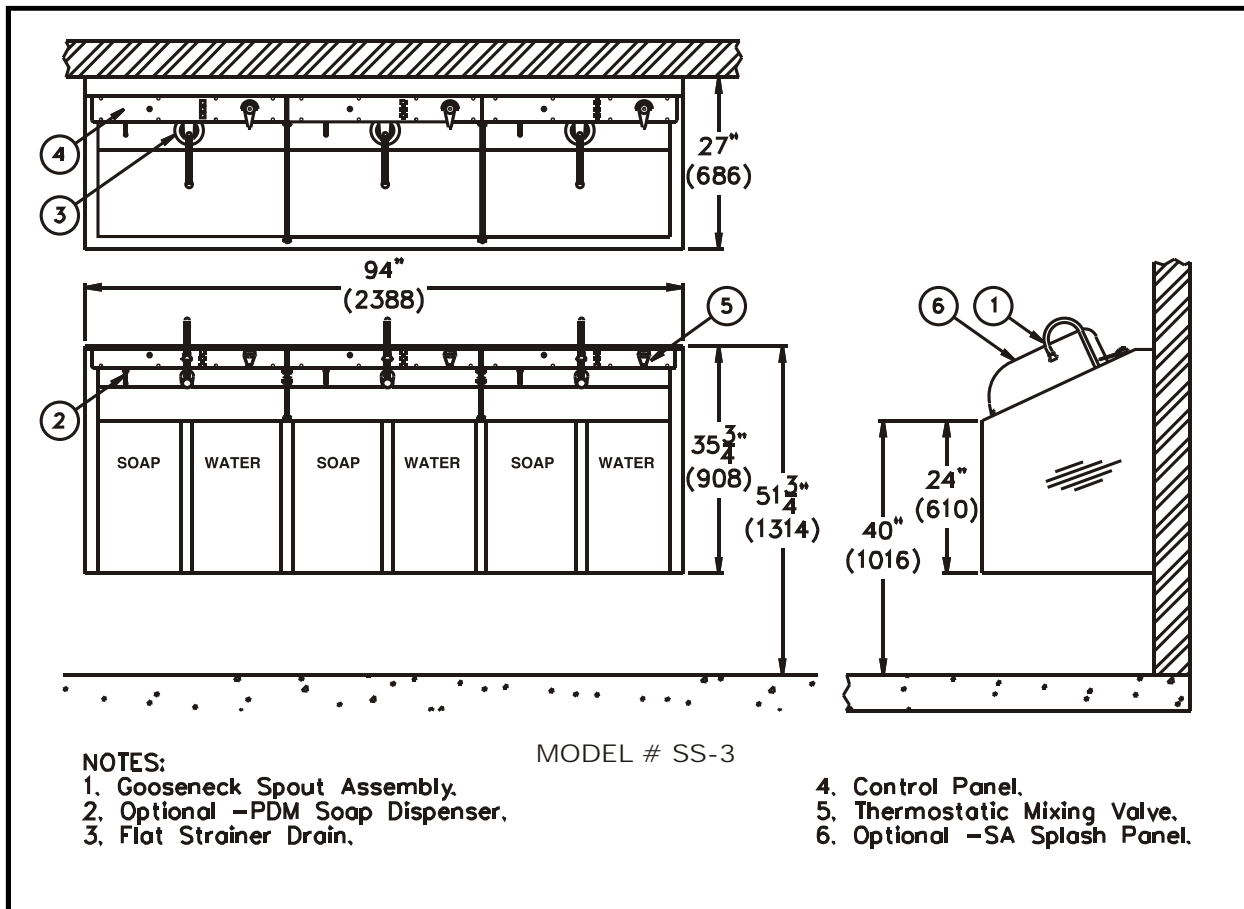
MOUNTING

○ -MC Mounting Carrier (Off-Floor Installation)
○ -PB Pedestal Base (On-Floor Installation)

Product Options

○ -BAT Battery Operated (-SO)
○ -DTD Digital Time Display
○ -ETC Electronic Timing Controller
○ -LM Light Module
○ -PDM Metering Liquid Soap Dispenser
○ -SA Splash Panel
○ -SFS Soap Flush System
○ -SO Sensor Operated
○ -SS Storage Shelf
○ -SWV Swivel Nozzle on Gooseneck

Please visit www.whitehallmfg.com for most current specifications.



All dimensions are nominal and subject to manufacturer's change without notice. Whitehall assumes no responsibility for use of void or suspended data © 2004 Whitehall Manufacturing, A Division of Acorn Engineering Company. Please visit www.whitehallmfg.com for most current specifications.

SELECTION SUMMARY & APPROVAL FOR MANUFACTURING

Model Number & Options _____ Quantity _____
 Company _____ Date _____
 Contact _____ Title _____
 Approval for Manufacturing/Signature _____