



Whitehall Manufacturing

Hospital-Ware

Whitehall Versalette - 41" Wide

Model 4042

Please visit www.whitehallmfg.com
for most current specifications.



Fixture may show some available options.

Versalette™ features a durable, user friendly design which is both functional and compact. The Versalette™ includes a stainless steel sink, bedpan washer and vitreous china toilet with a toilet cover that doubles as a bedside seat.

Cabinet surface is high pressure laminate. Specify desired color selection. Interior surfaces are stain-resistant melamine laminate. Corners are rounded with soft edges. Cabinet features a unique angled door which swings open to allow access to the bedpan washer and toilet tissue holder. Cabinet includes a pivoting, padded toilet cover and back rest which doubles as a bedside seat. Seat color selection is determined by factory. Base molding for the cabinet is by others.

Countertop is finished with high pressure laminate and features rounded corners. Specify desired color selection.

Lavatory is heavy gage, type 304 stainless steel with rim and multi-sided bowl. Bowl measures 12-3/4" x 8-1/4" x 6" deep. A chrome-plated grid strainer, tailpiece and 1-1/2" P-trap are provided.

Hot and Cold Mixing Faucet includes wrist blade handles and a gooseneck spout and conforms with CHSC 118675 lead free requirements.

Toilet is a wall mounted, siphon jet, white vitreous china style and features an elongated bowl, 1.6 Gallons Per Flush and self-sustaining white hinged seat. Required wall carrier is by others.

Hydraulic Flush Valve is provided for installation within the wall and includes an access panel to allow for service. Minimum required flow pressure is 25 PSI when used in conjunction with a minimum 1.6 gpf flush valve..

Bedpan Washer is concealed within cabinet and includes a hand-held bedpan washer with volume control, positive shut-off and stainless steel hose. **An elevated pressure type vacuum breaker by others is recommended with this feature to prevent back-siphonage or backflow occurring and possibly contaminating the water supply. Consult local codes and ordinances for requirements.** Optional -BWD Bed Pan Washer Drain is recommended.

GUIDE SPECIFICATION

Whitehall 41" wide Versalette™ (specify model number and options). Cabinet surface to be high pressure laminate. Base molding by others. Countertop finished with high pressure laminate. Includes pivoting padded seat cover with back rest, hydraulic flush valve, access panel and toilet tissue holder. Wall mounted, elongated, white vitreous china toilet bowl with 1.6 GPF and self-sustaining hinged seat. Wall carrier by others. Stainless steel multi-sided lavy. Concealed bedpan washer cabinet shall include a hand-held bedpan washer with positive shut-off and stainless steel hose.



Whitehall Manufacturing

Hospital-Ware

MODEL NUMBER AND OPTIONS SELECTION

BASE MODEL NUMBER (Must Specify)

- HW - 4042 Versalette™ - 41" Wide with Multi-Sided Lavy

TOILET ORIENTATION (Must Specify)

- L Left Hand Toilet
- R Right Hand Toilet

Note: L (Left) or R (Right) indicates hinged Cabinet location in opened position when facing the fixture. Lavy is always located on side opposite the toilet.

BACKSPLASH ORIENTATION (Must Specify)

- 1 Back Wall Only (One Wall)
- 2 Right Hand Corner (Two Wall)
- 3 Left Hand Corner (Two Wall)
- 4 Alcove (Three Wall)

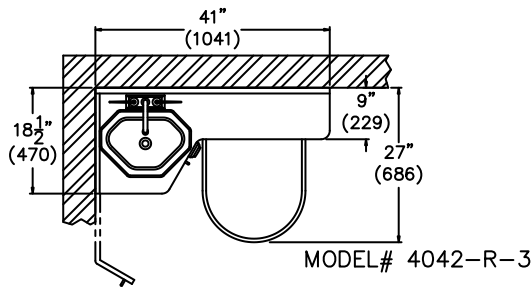
FLUSH VALVE SELECTION

- HET - 1.28 GPF (Only Avail. w/ -SST Option)
- ULF - 1.6 GPF
- 3.5 GPF

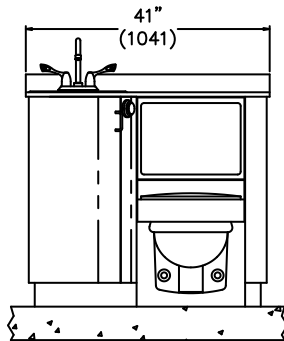
COLOR SELECTION (Must Specify)

Countertop _____

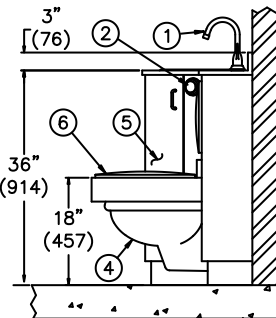
Cabinet _____



- NOTES:
1. Lavatory Gooseneck Faucet.
 2. Flush Valve Pushbutton.
 3. Stainless Steel Lavatory.
 4. White China Toilet.
 5. Bedpan Washer Compartment.
 6. Pivoting Padded Toilet Cover.



MODEL# 4042-R-1



PRODUCT OPTIONS (Must Specify)

- AE Aerator (on Gooseneck Spout)
- BAT-SO Battery Operated (-SO)
- BL Bedpan Lugs
- BWD Bedpan Washer Drain
- CCL Corterra™ Countertop w/ Integral Lavy
- CCT Corterra™ Countertop
Specify Color: _____
- CNCT Corian™ Countertop w/ Stn. Steel Lavy
- CNCTL Corian™ Countertop w/ Integral Contrasting Colored Lavy Bowl
Stn. Steel Countertop w/ Integral Lavy
- CS Hemo-Dialysis Box, Single Valve
- DB1 Hemo-Dialysis Box, Dual Valve
- EC Extended Countertop
Specify Length: _____
- EG Enviro-Glaze:
 Lavy
 Toilet Exterior Only
 Toilet Interior
Specify Color: _____
- HET High Efficiency Toilet (Only Avail. w/ -SST Stainless Steel Toilet Option is Selected)
- LCT Less Countertop, Furnish Lavy & Valve
- LCTL Less Countertop & Lavy, Furnish Valve
- LCTLV Less Countertop, Lavy & Valve
- LFN Laminar Flow Nozzle
- LLV Less Lavy & Valve, Furnish Countertop
- LS Lavatory Hose Spray
- LV Less Valve, Furnish Countertop & Lavy
- MT Metal Template
- SF Special Finish Specify Color: _____
- SO Sensor Operated Valve
- SST Stainless Steel Toilet:
 Off-Floor
 On-Floor
- SUG Swing Up grab Bar
- VF Concealed H & C Foot Pedal Operated Air-Control Valve
- WO3 Waste Outlet 3" in Lieu of Std. 2-3/8" (Requires a 3.5 gpf Flush Valve)

Please visit www.whitehallmfg.com for most current specifications.

SELECTION SUMMARY & APPROVAL FOR MANUFACTURING

Model Number & Options _____ Quantity _____
 Company _____ Date _____
 Contact _____ Title _____
 Approval for Manufacturing/Signature _____

All dimensions are nominal and subject to manufacturer's change without notice. Whitehall assumes no responsibility for use of void or suspended data © 2009 Whitehall Manufacturing, A Division of Acorn Engineering Company. Please visit www.whitehallmfg.com for most current specifications.