



Whitehall Manufacturing

Hospital-Ware

Whitehall ADA Versalette - 58-7/8" Wide

Model 4048ADA

Please visit www.whitehallmfg.com
for most current specifications.



Fixture may show some available options.

ADA Versalette™ features a durable, user friendly design which is both functional and compact. The Versalette™ includes a large stainless steel sink, bedpan washer, grab bar and vitreous china toilet with a toilet cover that doubles as a bedside seat. Basin and toilet meet ANSI, UFAS and ADA requirements. Consult code requirements for proper placement within rooms. Compliance is subject to the interpretation and requirements of the local code authority.

Cabinet surface is high pressure laminate. Specify desired color selection. Interior surfaces are stain-resistant melamine laminate. Cabinet includes door to allow access to the bedpan washer and toilet tissue holder and a separate access panel for plumbing access. Cabinet includes a pivoting, padded toilet cover and back rest which doubles as a bedside seat. Seat color selection is determined by factory. Cabinet features a heavy duty stainless steel modular frame. Base molding for the cabinet is by others.

Countertop is constructed of Corterra™ cast polyester resin. Specify desired color selection.

Lavatory Basin is self-rimming, heavy gage, type 304 stainless steel with large "D" shape bowl. Bowl measures 16" diameter x 5" deep. A chrome-plated grid strainer, tailpiece and 1-1/2" P-trap are provided.

Hot and Cold Mixing Faucet includes wrist blade handles and a gooseneck spout and conforms with CHSC 118675 lead free requirements.

Toilet is a wall mounted, siphon jet, white vitreous china style and features an elongated bowl, 1.6 gallons per flush and self-sustaining white hinged seat. Required wall carrier is by others. Toilet is optionally available in stainless steel.

Hydraulic Flush Valve is provided for installation within the wall and includes an access panel to allow for service. Minimum required flow pressure is 25 PSI when used in conjunction with a minimum 1.6 gpf flush valve.

Bedpan Washer is concealed within cabinet and includes a hand-held bedpan washer with volume control, positive shut-off and stainless steel hose. **An elevated pressure type vacuum breaker by others is recommended with this feature to prevent back-siphonage or backflow occurring and possibly contaminating the water supply. Consult local codes and ordinances for requirements.** Optional -BWD Bed Pan Washer Drain is recommended.

Grab Bar is 36" long, type 304 stainless steel and is integrated within unit. Additional required side wall grab bar is provided by others.

GUIDE SPECIFICATION

Whitehall ADA Compliant Versalette™ (specify model number and options). Units to conform with ANSI, UFAS and ADA requirements Cabinet shall include heavy duty modular stainless steel frame. Provide 36" long stainless steel grab bar. Cabinet surface to be high pressure laminate. Countertop to be constructed of Corterra™ cast polyester resin (with aluminum trihydrate and other fillers). Specify color. Provide pivoting padded seat cover with back rest, hydraulic flush valve, plumbing access and toilet tissue holder. Provide wall mounted, elongated, white vitreous china toilet bowl with 1.6 GPF and self-sustaining hinged seat complete with hydraulic flush valve and push button. Wall carrier by others. Provide stainless steel basin. Concealed bedpan washer cabinet shall include a hand-held bedpan washer with positive shut-off and stainless steel hose.

* Patent applied for



Whitehall Manufacturing

Hospital-Ware

MODEL NUMBER AND OPTIONS SELECTION

BASE MODEL NUMBER (Must Specify)

- HW - 4048-ADA Versaletto™ - 58-7/8" Wide with "D" Basin

TOILET ORIENTATION (Must Specify)

- L Left Hand Toilet
- R Right Hand Toilet

NOTES: L (Left) or R (Right) indicates toilet location in opened position when facing the fixture. Lavy is always located on side opposite the toilet.

BACKSPLASH ORIENTATION (Must Specify)

- 1 Back Wall Only (One Wall)
- 2 Right Hand Corner (Two Wall)
- 3 Left Hand Corner (Two Wall)
- 4 Alcove (Three Wall)

FLUSH VALVE SELECTION

- HET-1.28 GPF (Only Avail. w/ -SST Option)
- ULF-1.6 GPF
- 3.5 GPF

COLOR SELECTION (Must Specify)

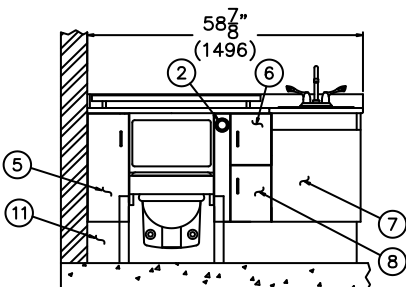
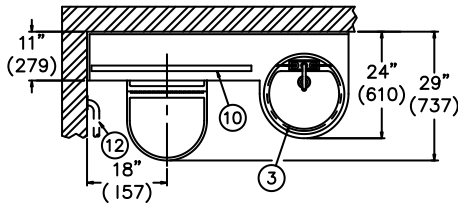
Countertop _____

Cabinet _____

Please visit www.acorneng.com for most current specifications.

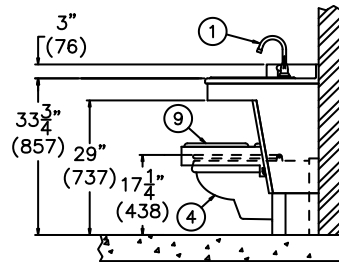
PRODUCT OPTIONS (Must Specify)

- AE Aerator (on Gooseneck Spout)
- BAT-SO Battery Operated (-SO)
- BL Bedpan Lugs
- BWD Bedpan Washer Drain
- CCL Corterra™ Countertop w/ Integral Lavy
- CNCT Corian™ Countertop w/ Stn. Steel Lavy
- CNCTL Corian™ Countertop w/ Integral Contrasting Colored Lavy Bowl
- CS Stainless Steel Countertop w/ Int. Lavy
- DB1 Hemo-Dialysis Box, Single Valve
- DB2 Hemo-Dialysis Box, Dual Valve
- EC Extended Countertop
- EG Enviro-Glaze:
 - Lavy
 - Cabinet Interior
 - Toilet Exterior Only
 - Toilet Interior
- Specify Color: _____
- HET High Efficiency Toilet (Only Avail. w/ -SST Stainless Steel Toilet Option is Selected)
- LCT Less Countertop, Furnish Lavy & Valve
- LCTL Less Countertop & Lavy, Furnish Valve
- LCTLV Less Countertop, Lavy & Valve
- LFN Laminar Flow Nozzle
- LLV Less Lavy & Valve, Furnish Countertop
- LS Lavatory Hose Spray
- LV Less Valve, Furnish Countertop & Lavy
- MT Metal Template
- SF Special Finish Specify Color: _____
- SO Sensor Operated Valve
- SS Storage Shelf
- SST Stainless Steel Toilet:
 - Off-Floor
 - On-FLR Floor Outlet
 - On-FLR Wall Outlet
- SUG Swing Up Grab Bar
- WO3 Waste Outlet 3" in Lieu of Std. 2-3/8" (Requires a 3.5 gpf Flush Valve)



NOTES:

1. Lavatory Gooseneck w/Wrist Blade Faucet.
2. Flush Valve Pushbutton.
3. Stainless Steel Lavatory.
4. Wall Mtd. White China Toilet (Standard).
5. Bedpan Washer Compartment.
6. Paper Holder Compartment.
7. Plumbing Access Compartment.



8. Storage or Optional -DB Dialysis Compartment.
9. Removable Hinged Padded Toilet Cover.
10. 36" Minimum Stainless Steel Grab Bar.
11. Stainless Steel Kick Panel.
12. 42" Minimum Grab Bar (By Others).

MODEL # 4048-ADA-L-3

SELECTION SUMMARY & APPROVAL FOR MANUFACTURING

Model Number & Options _____ Quantity _____
 Company _____ Date _____
 Contact _____ Title _____
 Approval for Manufacturing/Signature _____

All dimensions are nominal and subject to manufacturer's change without notice. Whitehall assumes no responsibility for use of void or suspended data © 2009 Whitehall Manufacturing, A Division of Acorn Engineering Company. Please visit www.whitehallmfg.com for most current specifications.