



WHITEHALL WHIRLPOOL SELECTION

Whitehall's quality whirlpools are both flexible in their application and durable in their construction, with a variety of models to choose from, including Podiatry, Extremity, Hi-Boy, Lo-Boy, Sports, Slant Back and Full Body Immersion versions and numerous options.

How to Order:

1. Specify Series
2. Specify desired capacity
3. Specify type
4. Select desired suffix options

Examples: E-45-M-ADH-EG =

Mobile Extremity Whirlpool with 45 Gallon Capacity,
Auxilliary Drain Hose Assembly and Enviro-Glaze color finish.

E - **4** **5** - **M** - **A** **D** **H** - **E** **G**

SERIES	CAPACITY	TYPE	SUFFIX OPTIONS
--------	----------	------	----------------

Series:

- P (Podiatry Whirlpools)
- E (Extremity Whirlpools)
- H (Hi-Boy Whirlpools)
- L (Lo-Boy Whirlpools)
- S (Sports Whirlpools)
- SB (Slant Back Whirlpools)
- F (Full Body Immersion Tanks)

Capacity:

- 10 Gallons
- 15 Gallons
- 22 Gallons
- 27 Gallons
- 45 Gallons
- 60 Gallons
- 75 Gallons
- 85 Gallons
- 90 Gallons
- 100 Gallons
- 105 Gallons
- 110 Gallons
- 260 Gallons
- 300 Gallons
- 425 Gallons

Suffix Option:

See suffix option listed
on the following pages

Type:

- M (Mobile)
- MH (Mobile with Handle)
- MU (Mobile with Undercarriage)
- S (Stationary)
- SP (Stationary with Pedestal)
- SL (Stationary with Legs)



Whitehall Manufacturing

Whirlpool Options

Use	Model	Capacity (measured in gallons)											Whirlpool Series												
		Width	Length	-M	-MH	-MU	-S	-SP	-SL	-HYL	-ADH	-AEH		-AFC1	-AFC2	-ALC	-ALS	-AMF	-ARS	-AS1	-AS2	-AS3	-BH	-BHS	-BSS
	P-10-M	10	13"	22"	X	X	X			X	X		X	X	X	X									Podiatry Series
	P-10-S	10	13"	22"				S						X	X										
	P-15-M	15	13"	25"	X	X	X			X	X		X	X	X	X									
	P-15-S	15	13"	25"				S						X	X										
	P-22-M	22	15"	28"	S					X	X		X	X	X		X								
	P-22-S	22	15"	28"				S						X	X	X									
	E-15-M	15	13"	25"	X	X	X			X	X		X	X	X	X		X							Extremity Series
	E-15-S	15	13"	25"				S						X	X										
	E-22-M	22	15"	28"	X		X			X	X		X	X	X	X		X							
	E-22-S	22	15"	28"				S						X	X	X		X							
	E-22-SP	22	15"	28"					S				X	X				X							
	E-27-M	27	15"	28"	S					X			X	X	X	X		X							
	E-27-S	27	15"	28"				S					X	X	X	X		X							
	E-45-M	45	15"	32"	S					X			X	X				X							
	E-45-S	45	15"	32"				S					X	X				X							
	H-60-M	60	20"	36"				S		X			X	X				X	X						Hi-Boy Series
H-60-S	60	20"	36"				S					X	X				X	X							
	H-75-M	75	20"	42"	S					X			X	X				X	X						
	H-75-S	75	20"	42"				S					X	X				X	X						
	H-90-M	90	20"	48"	S					X			X	X				X	X						
	H-90-S	90	20"	48"				S					X	X				X	X						
	H-105-M	105	24"	48"	S					X			X	X				X		X					
	H-105-S	105	24"	48"				S					X	X				X		X					
	L-75-M	75	24"	52"	S					X			X	X				X			X				Low-Boy Series
	L-75-S	75	24"	52"				S					X	X				X			X				
	L-75-SL	75	24"	52"					S	X								X			X				
	L-90-M	90	24"	60"	S					X			X	X				X			X				
	L-90-S	90	24"	60"				S					X	X				X			X				
	L-90-SL	90	24"	60"					S	X	X							X			X				
	L-105-M	105	24"	66"	S					X			X	X				X			X				
	L-105-S	105	24"	66"				S					X	X				X			X				
	L-105-SL	105	24"	66"					S	X								X			X				
	S-85-M	85	20"	48"	S					X			X	X				X	X						Sports Series
S-85-S	85	20"	48"				S					X	X				X	X							
	S-85-SL	85	20"	48"					S	X			X	X				X	X						
	S-90-M	90	24"	46"	S					X			X	X				X		X					
	S-90-S	90	24"	46"				S					X	X				X		X					
	S-90-SL	90"	24"	46"					S				X	X				X		X					
	S-110-M	110	24"	56"	S					X			X	X				X		X					
	S-110-S	110	24"	56"				S					X	X				X		X					
	S-110-SL	110	24"	56"					S				X	X				X		X					
	SB-100-M	100	40"	76"	S					X				X	X										Slant Back Series
SB-100-S	100	40"	76"				S						X	X											
	F-260	260	41"	95"				S					X							X	X	X			Full Body Immersion Tanks
	F-300	300	50"	89"				S					X							X	X	X			
	F-270	270	64"	90"				S					X							X	X	X			
	F-425	425	77"	106"				S					X							X	X	X			

x = option available on this whirlpool; s = comes standard with this whirlpool



Whitehall Manufacturing

Whirlpool Options

Whitehall Whirlpool Options

Continued

	-CTS 1	-CTS 2	-CTS 3	-ECR	-EG	-GFI	-HR	-LOGO	-MXT 1	-MXT 2	-MXT 3	-MXT 4	-MXT 5	-MXWH	-OEH 1	-OEH 2	-OEH 3	-PCS	-PHS 1	-PHS 2	-RC	-RHG	-RS	-SDO	-SDP	-TTS 1	-TTS 2	-WLS	-WMB
	Combo table with seats	Combo table with seats	Combo table with seats	Electric cord reel	Envyto Glaze	Ground fault interrupter	Head rest, Adjustable	Applied logos	Thermosatic mixing valve - 15 gpm	Thermosatic mixing valve - 25 gpm	Thermosatic mixing valve - 45 gpm	Thermosatic mixing valve - 80 gpm	Washout hose attachment for MXT valve	Overhead electric hoist - 125 gpm	Overhead electric hoist 115/60Hz	Pump cover strainer	Patient handling system (stretcher type)	Recessed cabinet, stainless steel	Rubber hand grips	Reclining seat	Separate drain & overflow assy.	Separate drain pump	Tank top seat	Tank top seat	Water level sensor	Wall mounting brackets			
P-10-M				X	X	X											X						X			X			
P-10-S				X	X	X	X						X				X						X			X			
P-15-M				X	X	X							X				X						X			X			
P-15-S				X	X	X	X						X				X						X			X			
P-22-M				X	X	X							X				X						X			X			
P-22-S				X	X	X	X						X				X						X			X			
E-15-M				X	X	X							X				X						X			X			
E-15-S				X	X	X	X						X				X						X			X			
E-22-M				X	X	X							X				X						X			X			
E-22-S				X	X	X	X						X				X						X			X			
E-22-SP				X	X	X	X						X				X						X			X			
E-27-M				X	X	X							X				X						X			X			
E-27-S				X	X	X	X						X				X						X			X			
E-45-M				X	X	X							X				X					X			X				
E-45-S				X	X	X	X	X					X				X					X			X				
H-60-M	X			X	X	X	X						X				X					X	X		X	X	X		
H-60-S	X			X	X	X	X	X					X				X					X	X		X	X	X		
H-75-M	X			X	X	X	X						X				X					X	X		X	X	X		
H-75-S	X			X	X	X	X	X					X				X					X	X		X	X	X		
H-90-M	X			X	X	X	X						X				X					X	X		X	X	X		
H-90-S	X			X	X	X	X	X					X				X					X	X		X	X	X		
H-105-M		X		X	X	X							X				X					X			X	X	X		
H-105-S		X		X	X	X	X	X					X				X					X			X	X	X		
L-75-M		X		X	X	X	X						X				X					X	X		X	X	X		
L-75-S		X		X	X	X	X	X					X				X					X	X		X	X	X		
L-75-SL		X		X	X	X	X	X					X				X					X	X		X	X	X		
L-90-M		X		X	X	X	X						X				X					X	X		X	X	X		
L-90-S		X		X	X	X	X	X					X				X					X	X		X	X	X		
L-90-SL		X		X	X	X	X	X					X				X					X	X		X	X	X		
L-105-M		X		X	X	X	X						X				X					X	X		X	X	X		
L-105-S		X		X	X	X	X	X					X				X					X	X		X	X	X		
L-105-SL		X		X	X	X	X	X					X				X					X	X		X	X	X		
S-85-M	X			X	X	X							X				X					X	X		X	X	X		
S-85-S	X			X	X	X	X	X					X				X					X	X		X	X	X		
S-85-SL	X			X	X	X	X	X					X				X					X	X		X	X	X		
S-90-M		X		X	X	X							X				X					X			X	X	X		
S-90-S		X		X	X	X	X						X				X					X			X	X	X		
S-90-SL		X		X	X	X	X						X				X					X			X	X	X		
S-110-M		X		X	X	X							X				X					X			X	X	X		
S-110-S		X		X	X	X	X						X				X					X			X	X	X		
S-110-SL		X		X	X	X	X						X				X					X			X	X	X		
SB-100-M				X	X	X							X				X					X							
SB-100-S				X	X	X	X						X				X					X							
F-260				X	X	S				X	X	X	X	X	X	X	X	X	X	X	X	X						X	
F-300				X	X	S				X	X	X	X	X	X	X	X	X	X	X	X	X						X	
F-270				X	X	S				X	X	X	X	X	X	X	X	X	X	X	X	X						X	
F-425				X	X	S				X	X	X	X	X	X	X	X	X	X	X	X	X						X	

x = option available on this whirlpool; s = comes standard with this whirlpool



-ADH Auxiliary Drain Hose Assembly

This 12" hose with chrome-plated brass fittings attaches to the drain valve of a mobile whirlpool. The hose directs the flow of water when emptying to a floor drain outlet. (Note: an additional length of hose is available upon request.)



-AEH Attachment for Electric Hoist

This option provides a means of connecting either the Body Support Stretcher (-BSS) or the Body Hoist Sling (-BHS) to the Overhead Electric hoist (-OEH).



-AHC1 Adjustable High Chair With Casters **-AHC2 Adjustable High Chair Without Casters**

These chairs are designed for use with either mobile or stationary whirlpools to facilitate treatment of the lower extremities. The height of AHC1 can be adjusted from 33" to 46". The AHC2 can be adjusted from 29" to 43". Both chairs are constructed from heavy gauge tubular steel. The chairs feature a reinforcing brace, arm rests, padded seat and back rest. The attached step is covered with a non-slip rubber mat. Protective rubber bumpers and restraint belts are also provided. The AHC1 is provided with 3" swivel casters - two with brakes. The AHC2 replaces the casters with rubber tips.



-ALC Adjustable Low Chair

Similar in construction to the high chairs, this low chair can be adjusted from 24" to 29" in height, and rubber tips are provided.



-ALS Adjustable Low Stool

This chair is adjustable from 18" to 28" in height and is designed for use along side a whirlpool. It is constructed from heavy gauge, chrome-plated tubular steel. The stool features 2" swivel casters, a padded seat and back rest.



-AMF Adjustable Mounting Fixture

This option is used in conjunction with the Body Support Stretcher (-BSS) to keep the upper part of the body above the water.



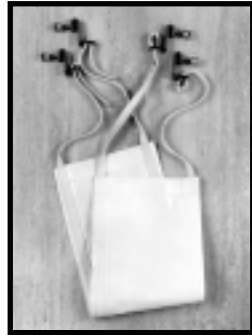
-ARS Arm Rest Support

This arm rest is used for supporting the arms or hands on either side of the whirlpool tank. It is fabricated entirely from Type 304 stainless steel and polished to a satin finish.



-AS1, -AS2 and -AS3 Adjustable Suspension Seats

These seats are designed for use inside the tank for low back, hip and leg treatment. Two side brackets with four levels of adjustments (three levels for the -AS3) are provided, along with an adjustable removable seat. The seats are fabricated entirely from Type 304 stainless steel. -AS1 is for 20" wide whirlpools. -AS2 is for 24" wide whirlpools except Lo-Boys. -AS3 is for all Lo-Boy whirlpools.



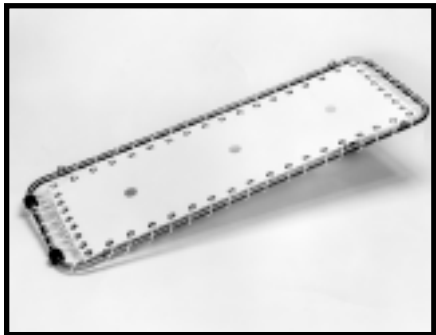
-BH Body Hammock

The body hammock securely anchors to the rim of the Full Body Immersion Tank. The hammock provides patient support while exercising extremities or soaking.



-BHS Body Hoist Sling

When used in conjunction with Attachment for Electric Hoist (-AEH) and the Overhead Electric Hoist (-OEH), this sling slowly lowers patients into the Full Body Immersion Tank.



-BSS Body Support Stretcher

When used in conjunction with the Overhead Electric Hoist (-OEH), this stretcher enables the therapist to gently lower patients into the Full Body Immersion Tank.



-CTS1, -CTS2 and -CTS3 Combination Table with Seats

These options provide comfortable, rim-height seats for lower extremity treatments and side bench seats for hand/arm treatments on either side of the tank. The bench seats also serve as steps. The table and bench seat tops are constructed from high density board with a laminate cover. The frame and legs are solid oak with a urethane finish. Floor levelers are provided. Models -CTS1, CTS2 and CTS3 are for the 20", 24" and Lo-Boy whirlpools, respectively.



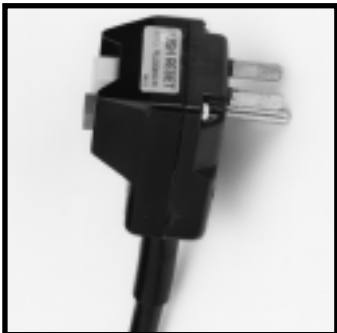
-ECR Electrical Cord Reel

This unit keeps the Overhead Electric Hoist (-OEH) power cord taut and consists of a reel-on swivel base with 25 feet of 3-wire supply cord.



-EG Enviro-Glaze®

This coating is a smooth, and resistant, exterior color finish. Some color choices feature a slight orange peel texture which will not bubble, endures impact and is chip resistant. Enviro-Glaze gives you the durability of stainless steel in a choice of decorative colors.



-GFI Ground Fault Interrupter

This option provides a safety feature that immediately shuts off the circuit if excessive current amps are drawn.



-HR Head Rest, Adjustable

This head rest is used in Lo-Boy whirlpools or Full Body Immersion Tanks to support the patient's head during treatment. It is fabricated from stainless steel tubing with a cover.



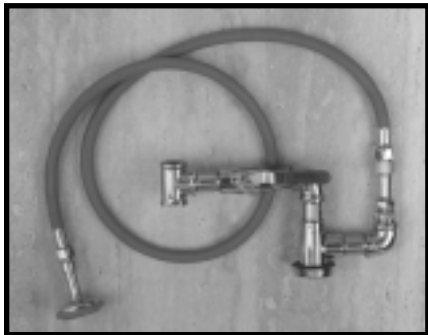
-LOGO Logo Graphics

This option allows the application of logos, graphics or a specific facility name on a whirlpool unit..



-MXT1 (15 GPM), -MXT2 (25 GPM) -MXT3 (45 GPM), -MXT4 (80 GPM) -MXT5 (125 GPM) Thermostatic Mixing Valve

These valves are designed to control the mixing of hot and cold water and deliver it at a constant, pre-set temperature. The valve is equipped with a union end, loose key, angle stop, check valves with built-in strainers and vacuum breaker. The -MXT3, -MXT4 and -MXT5 units are also furnished with a built in thermometer. Control valve is set to deliver water at temperatures up to 115 degrees Fahrenheit. Failure of the cold water supply will cause the hot water supply to close, eliminating any possibility of scalding. The -MXT1 and -MXT2 are recommended for use on stationary models, while the -MXT3, -MXT4 and -MXT5 can be specified for Full Body Immersion Tanks.



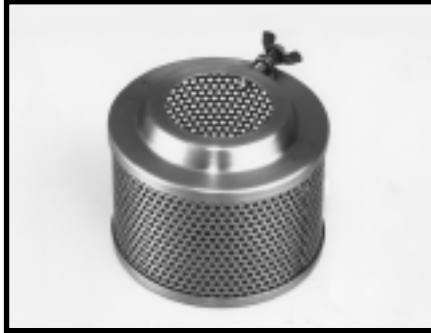
-MXWH Washout Hose Attachment

This option when installed on the discharge side of the Thermostatic Mixing Valve (-MXT) aids in tank clean up. It consists of a tee fitting, shut off/volume control valve, vacuum breaker, a 9 foot hose with a spray nozzle and a wall-mounted hose retainer.



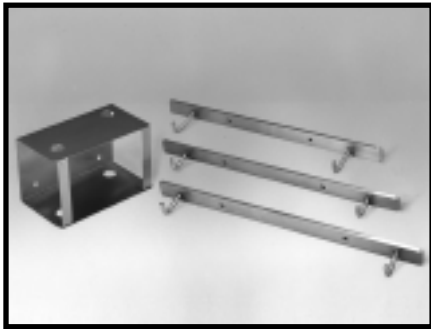
-OEH1 (115V 60Hz), -OEH2 (220V 50Hz), -OEH3 (220V 60Hz) Overhead Electric Hoist

These hoists are specially designed for hydrotherapy in Full Body Immersion Tanks. This equipment includes the following safety features: 1) low power 24 volt control pendant with grounded enclosure, 2) electrical overload protection, 3) upper and lower travel limit switches, 4) lower safety hook with single latch release button, 1/4 HP instantly reversible motor, permanently lubricated bearings, and 15 feet of heavy duty neoprene covered 3 wire power cord with hospital grade ground cap.



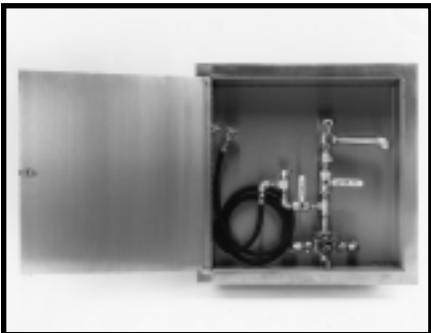
-PCS Pump Cover Strainer

This stainless steel strainer is designed for use with all hydrotherapy whirlpools and Full Body Immersion Tanks to screen out debris to avoid clogging the pump. It easily dismantles for cleaning.



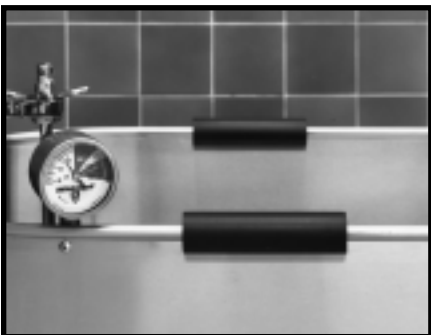
-WMB Wall Mounting Brackets

This set of four brackets, fabricated from stainless steel can be specified for wall storage of Full Body Immersion Tank accessories. These brackets allow adequate air circulation around accessories to aid in preventing contamination of stored equipment.



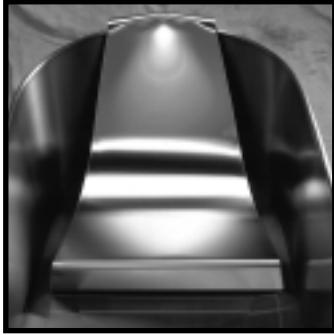
-RC Recessed Cabinet, Stainless Steel

This cabinet can be specified to house the optional Thermostatic Mixing Valve (-MXT).



-RHG Rubber Hand Grips

The rubber hand grips are designed to snap on to the rim of a whirlpool tank and are made from cylindrical rubber, 1-1/2" in diameter and 6" long.



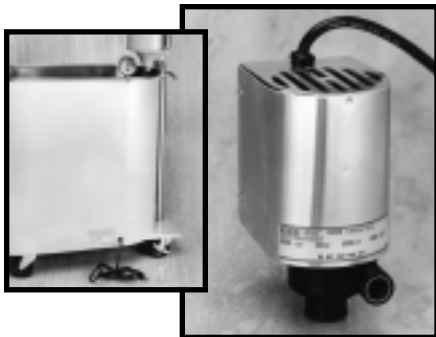
-RS Reclining Seat

This seat is recommended for use with Lo-Boy whirlpools to provide comfort to the patient. The seat is fabricated from stainless steel and polished to a satin finish.



-SDO Separate Drain and Overflow Assembly

The assembly is offered only on stationary whirlpools and is furnished in lieu of the standard combination drain and overflow system. This option features a quick open/close, lever-operated 2" drain valve and 2" overflow with perforated strainer. This provides surface scum removal and greater overflow handling capacity.



-SDP Separate Drain Pump

The pump is used on the underside of a mobile whirlpool tank and facilitates draining of the tank. The addition of this option will raise the height of some whirlpools by 2".



-TTS1 (20" Wide Tank)

-TTS2 (24" Wide Tank), Tank Top Seat

Designed for use with the whirlpool tank for treatment of lower extremities. The seat is 12" wide and extends around the front and sides of the tank.