



Whitehall Manufacturing®
Manufacturer of Healthcare and Rehabilitation Products since 1946

Bariatric Toilet

Division of
Acorn Engineering Company®



A MEMBER OF



Bariatric On-Floor Toilet ADA Compliant

Model WH2125-A



WH2125-A-W-2-FM-HSBJ-EGE10

Fixture May Show Some Available Options

Bariatric On-Floor Toilet ADA Compliant

Fixture is arranged to be installed on a finished wall optionally from the front or rear. Unit is fabricated of 14 gage, type 304 stainless steel and is seamless welded construction. Fixture (less - HSBJ Hinged Seat option) shall withstand loads up to 2,000 lbs. with no measurable deflection and loads up to 5,000 lbs. with no permanent damage. Optional -HSBJ Big John® Hinged Toilet Seat is rated at 1,200 lbs.

Fixture exterior and Bowl interior has a #4 polished satin finish.

Optional -EGE Enviro-Glaze color finishes are available to powder coat exterior of Bowl and highly recommended to ensure Patient comfort (Specify).

Housing includes side Access Panels to facilitate installation of fixture and Hinged Seat by others. Toilet complies with ADA requirements for accessibility. Compliance is subject to the interpretation and requirements of the local code authority.

Toilet is optionally available in both Floor Outlet or Wall Outlet with elongated Bowl and an overall depth of 29". Fixtures are manufactured to comply with ASME A112.19.3 and CSA B45.4 standards. Toilet requires a minimum of 25 PSI flow pressure and uses a minimum water consumption of 1.28 GPF. Trap will pass a 2-1/8" ball and is fully enclosed with a minimum 3-1/2" seal.

Installation style is offered for both Front Mount (-FM) and Rear Mount (-RM) for when an accessible Rear Plumbing Chase exists (Specify).

Wall Outlet configurations with Front Mounting (-FM) include a wall waste outlet with a 7-1/2" Dia. Recessed Gasket Flange. Rear Mount (-RM) fixtures include a 2-3/8" Dia. plain end Toilet Waste that extends 3" beyond back of fixture.

Floor Outlet configurations include a floor waste outlet with a 7-1/2" Dia. Recessed Gasket Flange for both Front (-FM) and Rear (-RM) mount installations.

Flush Valve supply is additionally available for exposed or concealed Flush Valve styles in 1.28 GPF, 1.6 GPF, or 3.5 GPF and with 1-1/2" NPT connection.

GUIDE SPECIFICATION

Provide and install Whitehall Bariatric ADA Compliant Toilet (specify model number and options). Unit shall conform to ADA requirements. Fixture shall be fabricated from 14 gage, type 304 stainless steel. Construction shall be seamless welded and exposed surfaces shall have a satin finish. Toilet shall have an elongated Bowl with a self-draining Flushing Rim and punching for Seat by others. Toilet shall be ASME A112.19.3 and CSA B45.4 compliant. Toilet requires a minimum of 25 PSI flow pressure and uses a minimum water consumption of 1.28 GPF. Fully enclosed Toilet Trap shall have a minimum 3-1/2" seal that shall pass a 2-1/8" diameter ball.

Please visit www.whitehallmfg.com
for most current specifications.



Recyclable
Product



Water
Conserving
Product

Complies
with the
following
standards:



Whitehall Mfg. • P.O. Box 3527 • City of Industry, CA 91744 • (800) 782-7706 • (626) 968-6681

WH2125-A

REVISED: 02/21/25



Whitehall Manufacturing®
Manufacturer of Healthcare and Rehabilitation Products since 1946

Bariatric Toilet

WALL THICKNESS AND TYPE

Thickness _____ Type _____

MODEL NUMBER AND OPTIONS SELECTION

BASE MODEL NUMBER

☒ WH2125-A Bariatric Toilet ADA Compliant

SUPPLY (Must Specify)

- ☐ -T Top (Exposed)
☐ -W Wall (Concealed)

FIXTURE MOUNTING AND WASTE (Must Specify)

- ☐ -2 On-Floor, Wall Outlet
☐ -3 On-Floor, Floor Outlet

INSTALLATION (Must Specify)

- ☐ -FM Front Mount
☐ -RM Rear Mount (Note: Requires Accessible Rear Plumbing Chase)

FLUSH VALVE GPF's (Must Specify)

- ☐ -1.28 GPF (HET)
☐ -1.6 GPF
☐ -3.5 GPF

FLUSHING INLET LOCATION

(Must Specify for -W Wall (Concealed) Supply)

- ☐ -LFV Flush Valve Left
☐ -RFV Flush Valve Right (Shown)

FLUSH VALVE OPTIONS (Must Specify)

SEE WHITEHALL SUPPLEMENTARY MATERIAL FOR FLUSH VALVE COVERS AND BOXES

- ☐ -FV Flush Valve, Mechanical (N/A for ADA)
☐ -FVBO Flush Valve by Others
☐ -FVH Flush Valve, Hydraulic (Wall Supply)
☐ -FVL Flush Valve, ADA Lever Handle (Wall Supply)
☐ -MVCFV Time-Trol Flush Valve (N/A for Top Supply)

TOILET SEAT OPTIONS

- ☐ -HSBJ Big John® Hinged Seat 1,200 lbs Rated
☐ -OFLC Open Front Less Cover (Shown Below)
☐ -OWFC Open Front With Cover
Less Punch for Hinged Seat
17" Flood Rim AFF

TOILET OPTIONS

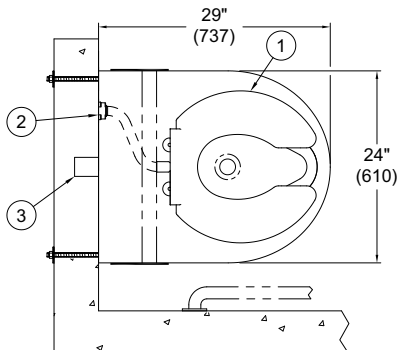
- ☐ -BL Bedpan Lugs
☐ -FT Flood-Trol (N/A w/ Top Supply)**
☐ -FTA Flood-Trol Auto-Reset (N/A w/ Top Supply)**
☐ -FTE Flood-Trol Electronic**

(NOTE: **Not available with Top Supply or -FM Front Mount)

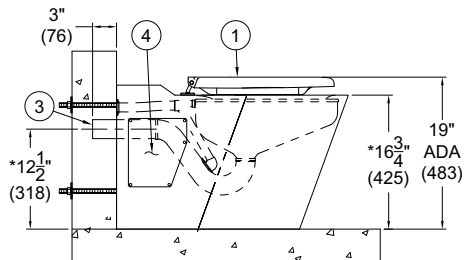
- ☐ -FVT Flush Thru Wall Connector
☐ -PE Plain End Toilet Waste
(Standard on Rear Mount Units)
☐ -TF Transformer, 120VAC to 24VAC (For -MVCFV)
☐ -TSC Toilet Shipping Cover
☐ -WO3B 2-3/8" P-Trap w/ 3" Plain End Waste Outlet
(-RM Rear Mount Only)

PRODUCT OPTIONS

- ☐ -EGE Enviro-Glaze Color Specify: _____
Toilet Exterior Only - [EG Color Selection Link](#)
☐ -SW Wall Sleeve (-RM Rear Mount Models Only)
☐ -VAC AcornVac System



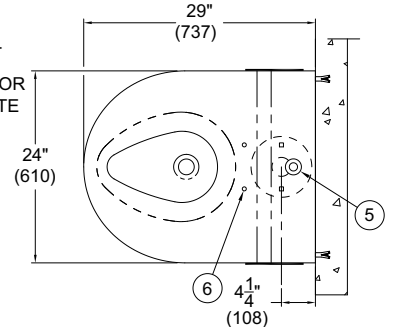
WH2125A-W-2-RM-RFV-HSBJ BLOWOUT JET



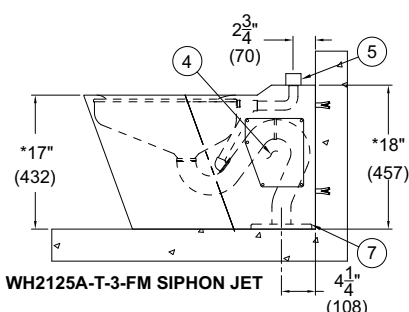
NOTES:

1. OPTIONAL -HSBJ BIG JOHN HINGED SEAT
2. -RFV OFFSET FLUSHING INLET SHOWN FOR -W CONCEALED SUPPLY. -LFV IS OPPOSITE
3. Ø2-3/8" PLAIN END WASTE OUTLET
4. LEFT AND RIGHT ACCESS PANELS
5. OPTIONAL -T TOP SUPPLY SHOWN
6. PUNCHING FOR HINGED SEAT
7. Ø7-1/2" GASKET FLANGE WASTE OUTLET

*FIXTURE INTENDED TO MEET ADA SEAT HEIGHT REQUIREMENTS WHEN OPTIONAL -LPFS IS SELECTED. FLOOD RIM BECOMES 17" AFF. ADA REQUIRES A MINIMUM OF 17" TO 19" MAXIMUM MEASURED FROM THE TOP OF THE SEAT TO THE FLOOR.



WH2125A-T-3-FM SIPHON JET



WARNING: Cancer and Reproductive Harm - www.P65Warnings.ca.gov

SELECTION SUMMARY & APPROVAL FOR MANUFACTURING

Model Number & Options _____ Quantity _____
Company _____ Date _____
Contact _____ Title _____
Approval for Manufacturing/Signature _____

All dimensions are nominal and subject to manufacturer's change without notice. Whitehall assumes no responsibility for use of void or superseded data © Whitehall Manufacturing, Member of Morris Group International. Please visit www.whitehallmfg.com for most current specifications.

Whitehall Mfg. • P.O. Box 3527 • City of Industry, CA 91744 • (800) 782-7706 • (626) 968-6681

WH2125-A

REVISED: 02/21/25