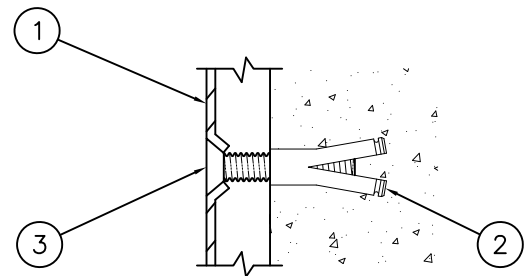


REFERENCE DRAWING	
FASTENERS	9951-005-W01



INSTALLATION INSTRUCTIONS:

- A- INSTALLATION REQUIRES A ROUGH WALL OPENING APPROXIMATELY 15-1/2" x 7-1/2" AND 4" DEEP
- B- USING TOWEL HOLDER ① AS A TEMPLATE LOCATE MOUNTING POINTS.

- C- DRILL HOLES FOR WALL ANCHORS BY OTHERS ②. INSTALL ANCHORS.
- D- SECURE TOWEL HOLDER ① TO WALL USING 1/4"-20 UNC VANDAL RESISTANT SCREWS ③ PROVIDED.

<p>WHITEHALL MANUFACTURING P.O. BOX 3527 Industry, CA 91744 15125 Proctor Ave Industry, CA 91746 (626) 968-6681 FAX (626) 855-4862</p>	<p>TITLE LIGATURE RESISTANT AUTO-RELEASE TOWEL HOLDER #1846FA</p>		
	<p>MANUFACTURE DATE</p> <p>JULY 2013</p> <p>TO PRESENT</p>	<p>DATE ISSUED</p> <p>07/12/13</p>	<p>DRAWING NUMBER</p> <p>9918-114-001</p>
		<p>DATE REVISED</p> <p>09/16/20 B</p>	