



**Whitehall Manufacturing®**  
Manufacturer of Healthcare and Rehabilitation Products since 1946

## Surgical Scrub Sinks

Division of  
Acorn Engineering Company®



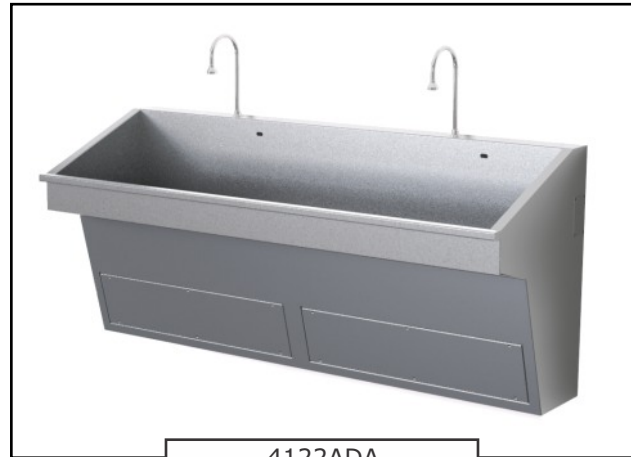
A MEMBER OF



### Whitehall Compact Surgical Scrub Sink ADA Compliant Two Station

Model 4122ADA

Please visit [www.whitehallmfg.com](http://www.whitehallmfg.com)  
for most current specifications.



4122ADA

Fixture May Show Some Available Options

**Surgical Scrub Sink** is designed for use in health care institutions providing surgeons with a convenient sink for pre-op scrub up.

**Fixture** is fabricated from heavy gage, type 304 stainless steel and is seamless welded construction with a satin finish. The cabinet interior is sound-deadened with a fire-resistant material. The unit is designed to be installed on the wall using a mounting carrier.

**Scrub Sink** is provided with a front panel which is easily removed for access to the water control valves, waste connections, stops and strainers. Scrub sink has a sloping bottom surface to minimize splashing and a 1-1/2" OD P-Trap assembly with a 3" flat strainer drain.

**Backsplash** has a gooseneck spout assembly with sprayhead that can be removed for sterilization.

**Hands Free Operation** includes infrared sensor located on back panel.

**T/P Temperature/Pressure Balancing Mixing Valve** is located behind the front panel and maintains a constant water temperature. This easily adjustable, anti-scald valve compensates for inlet temperature fluctuations.

**Solenoid Valve** is a slow closing, anti-water hammer type.

**Optional -EFW Eye/Face Wash** provides a Safety Manufacturing™ Model S0660 Series Swing Down Eye-Face Wash within Sink Trough and includes Factory installed Controls® Model ET71-1-BVS-OTG Safety Mixing Valve with Temperature Gauge and Stop Valves.

**Models with -EFW Option** comply with USP 800, Section 5.3 Eyewash Station Requirements.

#### GUIDE SPECIFICATION

Provide Whitehall ADA Compact Surgical Scrub Sink (specify model number and options). Fixture shall be fabricated from heavy gage, type 304 stainless steel, with seamless welded construction with a satin finish. Cabinet interior shall have a sound deadening, fire-resistant material. Cabinet shall also have removable access panel to allow access to water control valves, waste connections, stops and strainers. Sink shall have a sloping bottom to minimize splashing, and a 1-1/2" OD P-Trap assembly with a 3" flat strainer drain. Gooseneck shall have a removable sprayhead. Fixture shall have a T/P temperature/pressure balancing mixing valve with slow closing, anti-water hammer solenoid valve, infrared sensor and transformer. Transformer must be wired to a GFI protected circuit. Manufacturer shall provide necessary installation instructions.

Please visit [www.whitehallmfg.com](http://www.whitehallmfg.com)  
for most current specifications.



Whitehall Mfg. • P.O. Box 3527 • City of Industry, CA 91744 • (800) 782-7706 • (626) 968-6681

**4122ADA**

Updated: 03/22/2024



**Whitehall Manufacturing®**  
Manufacturer of Healthcare and Rehabilitation Products since 1946

## Surgical Scrub Sinks

### BASE MODEL NUMBER

☐ 4122ADA Compact Surgical Scrub Sink (2 Station)

### MOUNTING

☐ -MC Mounting Carrier

### Product Options

☐ -EFW Eye/Face Wash (Must Specify Below)

☐ LH Station ☐ RH Station

**NOTE:** When specified, ET71-1-BVS-OTG  
Emergency Mixing Valve will be provided

☐ -LFN Laminar Flow Nozzle

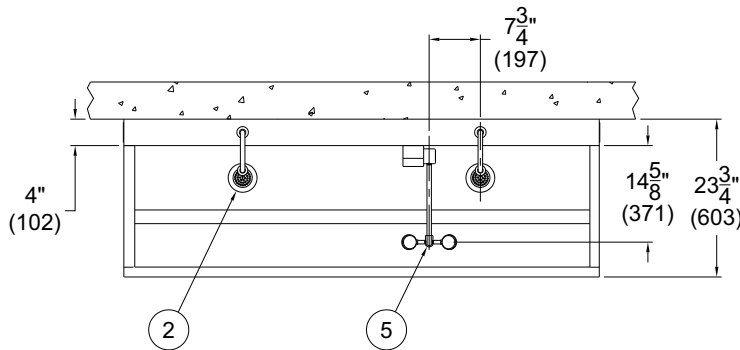
☐ -SA Splash Panel

☐ -SWV Swivel Nozzle on Gooseneck

### Accessories

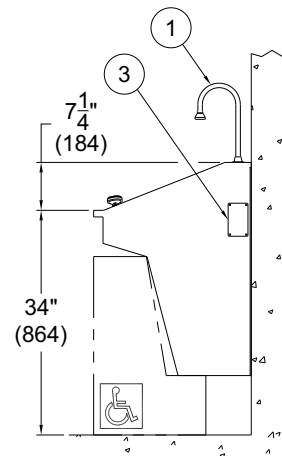
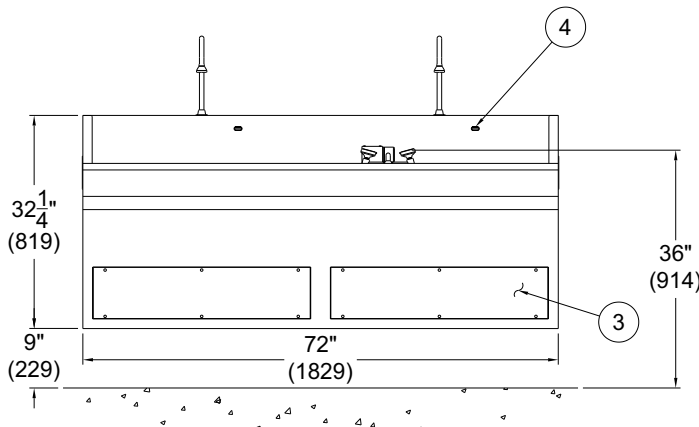
An appropriate Chronomite Instantaneous Tankless  
Water Heater may be purchased separately to ship  
with your scrub sink. Contact your sales rep for details  
or visit [www.chronomite.com](http://www.chronomite.com)

Please visit [www.whitehallmfg.com](http://www.whitehallmfg.com)  
for most current specifications.



### NOTES:

1. Gooseneck Spout Assembly
2. Flat Strainer Drain
3. Removable Access Panel
4. Infrared Sensor
5. Optional -EFW Eye/Face Wash



MODEL# 4122ADA-MC-EFW\_RH

**⚠ WARNING:** Cancer and Reproductive Harm - [www.P65Warnings.ca.gov](http://www.P65Warnings.ca.gov)

### SELECTION SUMMARY & APPROVAL FOR MANUFACTURING

Model Number & Options \_\_\_\_\_ Quantity \_\_\_\_\_  
Company \_\_\_\_\_ Date \_\_\_\_\_  
Contact \_\_\_\_\_ Title \_\_\_\_\_  
Approval for Manufacturing/Signature \_\_\_\_\_

All dimensions are nominal and subject to  
manufacturer's change without notice. Whitehall  
assumes no responsibility for use of void or  
suspended data. © Whitehall Manufacturing,  
Member of Morris Group International.  
Please visit [www.whitehallmfg.com](http://www.whitehallmfg.com) for most  
current specifications.

Whitehall Mfg. • P.O. Box 3527 • City of Industry, CA 91744 • (800) 782-7706 • (626) 968-6681

**4122ADA**

Updated: 03/22/2024