

INSTRUCTIONS FOR OPERATION AND CARE OF



Whitehall **WHIRLPOOL**



MXT15-OTG



Whitehall Manufacturing®
Manufacturer of Healthcare and Rehabilitation Products since 1946

P.O. Box 3527 • City of Industry, CA, 91744-0527, U.S.A.
800-782-7706 • 626-968-6681 • www.whitehallmfg.com

Member of  MORRIS GROUP
INTERNATIONAL



WARNING:

You are required to thoroughly read all installation instructions and product safety information before beginning the installation of this product.

FAILURE TO READ AND FOLLOW PROPER INSTALLATION AND MAINTENANCE INSTRUCTIONS MAY RESULT IN PRODUCT FAILURE WHICH CAN CAUSE PROPERTY DAMAGE, PERSONAL INJURY AND/OR DEATH.

Whitehall Manufacturing is not responsible for damages resulting from improper installation and/or maintenance. Installation of this valve shall be in accordance with ***Uniform Plumbing Code***.

TO ENSURE ACCURATE AND RELIABLE OPERATION OF THIS PRODUCT, IT IS ESSENTIAL TO:

- Properly design the system to minimize pressure and temperature variations.
- Implement an annual maintenance program to ensure proper operation and temperature setting of valve(s).
- This valve is factory preset. However, it can be adjusted. It is the responsibility of the installer and or facility maintenance personnel to make sure valve outlet temperature does not exceed 115°F (46°C) after installation, maintenance or repair.

SUPPLIES REQUIRED:

(Not provided by Acorn)

1. Wall escutcheon.
2. 5/64" Allen wrench.
3. Teflon tape for sealing water connections.



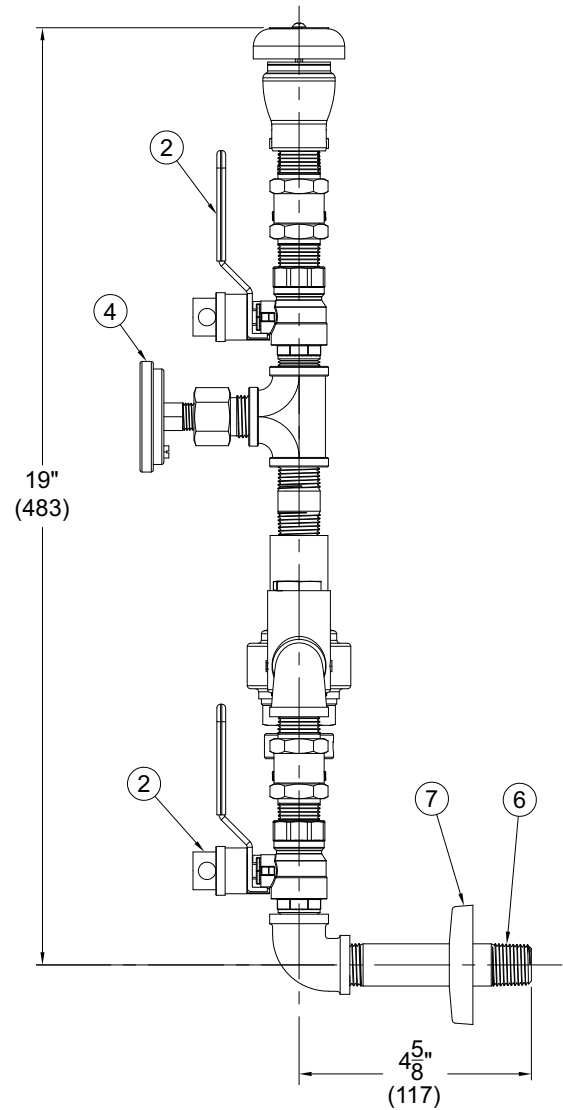
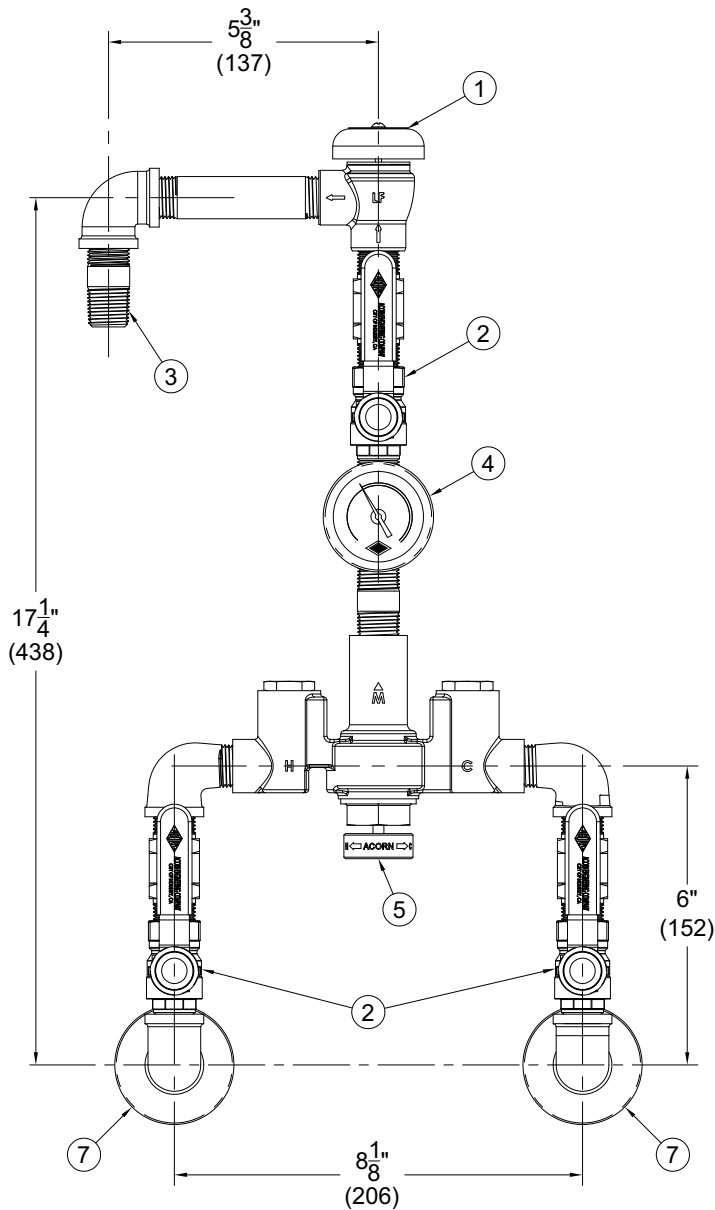
IMPORTANT

- Flush supply lines of all foreign material such as pipe dope, chips or solder prior to connecting to mixing valve.
- To ensure proper installation, review the Manual thoroughly to verify rough-ins before beginning any work.
- Installation and field adjustment are the responsibility of the installer.
- Maximum water pressure is 125 PSI (8.62 bars). Maximum inlet hot water temperature is 180°F (82°C). Maximum temperature output is 110°F (43°C). Valve assembly must be drained prior to being subjected to freezing temperatures. Valve includes integral check valves.

PRESSURE DROP PSID (kPa)	Cv	5 (34)	10 (69)	15 (103)	20 (138)	30 (207)	45 (310)	60 (414)
FLOW RATE GPM (LPM)	2.2	5 (19)	8 (26.7)	8.7 (32.8)	10 (37.9)	12.3 (46.4)	15 (56.8)	17.3 (65.6)



- ① ATMOSPHERIC VACUUM BREAKER
- ② LOCKABLE BALL VALVES
- ③ 1/2" NPT OUTLET CONNECTION
- ④ -OTG OUTLET TEMPERATURE GAUGE
- ⑤ TEMPERATURE ADJUSTMENT KNOB
- ⑥ 1/2" NPT INLET CONNECTIONS
- ⑦ ESCUTCHEONS



MXT15-OTG

NOTE;
ALL DIMENSIONS ARE IN INCHES (MM).

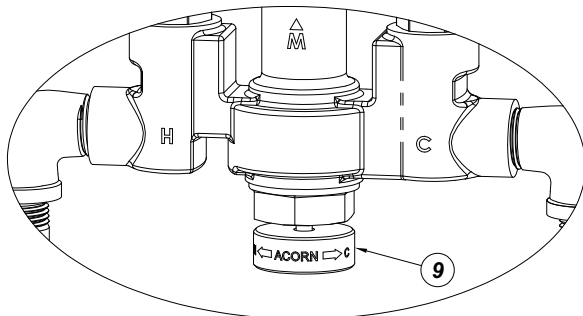


INSTALLATION:

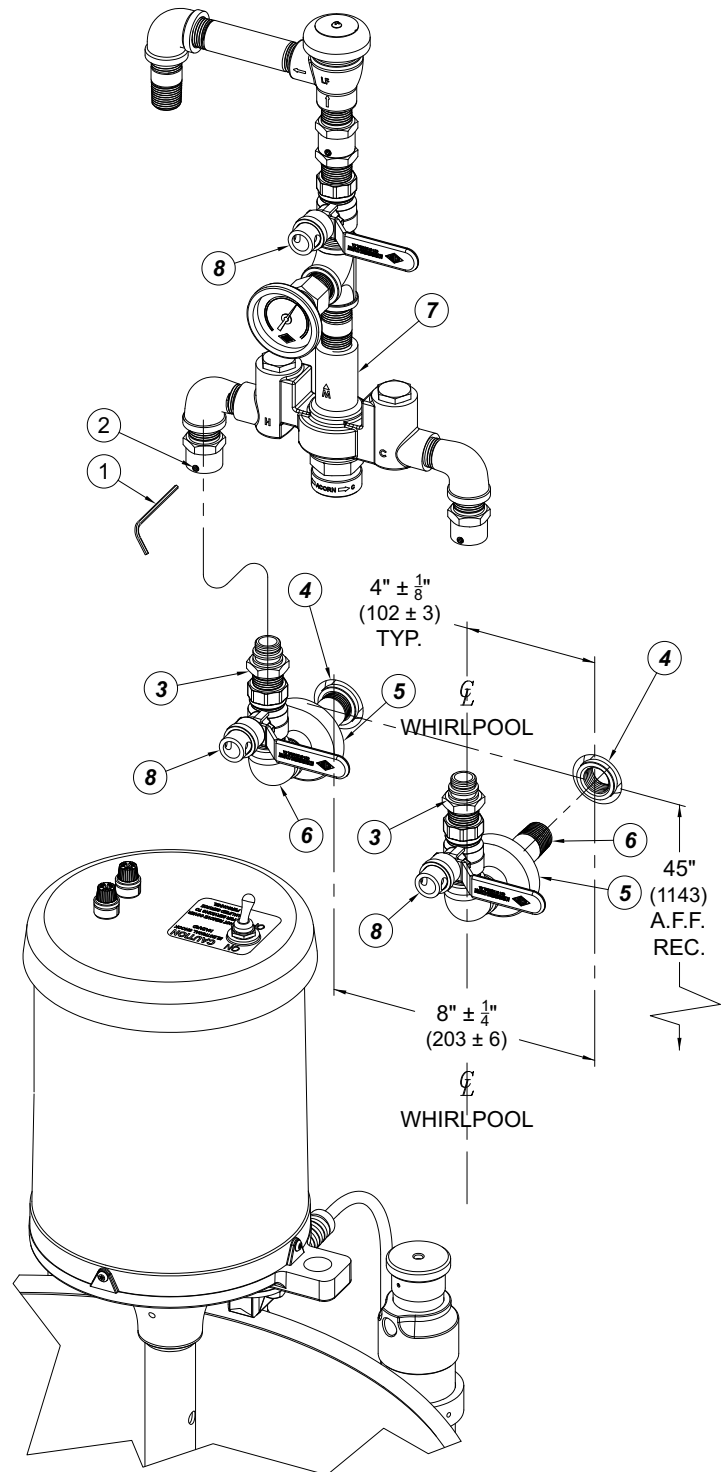
1. Locate mixing valve fixture in a suitable place accessible for servicing and adjusting. Valve assembly should be as close as possible to point of use.
2. Using a 5/64" (2mm) Allen wrench **1**, by others loosen set screws **2** on O-Ring connections **3**.
3. Thoroughly flush supplies **4**.
4. Install escutcheons **5** onto supply elbow assemblies **6**.
5. Connect Hot and Cold supply elbow assemblies **6** to supply lines **4**. Valve assembly connections are 1/2" NPT Male.
6. Place valve assembly **7** onto supply elbow assemblies **6** and tighten set screws **2**. Ensure supply lines **4** are on and slowly open ball valves **8** and inspect for leaks. If leaks are present tighten as needed.

TEMPERATURE ADJUSTMENT:

1. For hotter water, turn knob **9** counter clockwise and clockwise for cooler water. See Detail **A**

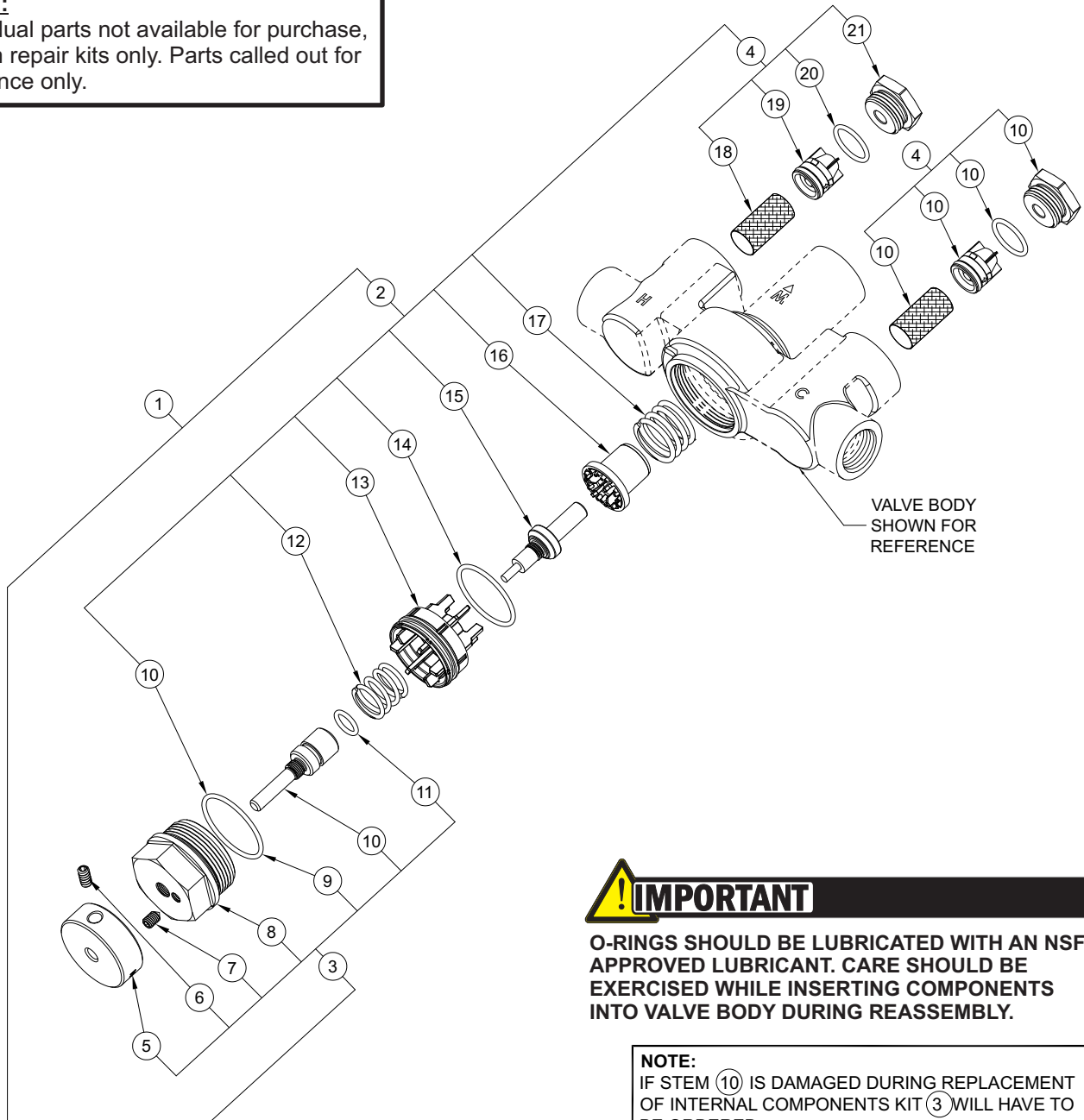


Detail - A



**NOTE:**

Individual parts not available for purchase, sold in repair kits only. Parts called out for reference only.

**! IMPORTANT**

O-RINGS SHOULD BE LUBRICATED WITH AN NSF APPROVED LUBRICANT. CARE SHOULD BE EXERCISED WHILE INSERTING COMPONENTS INTO VALVE BODY DURING REASSEMBLY.

NOTE:

IF STEM (10) IS DAMAGED DURING REPLACEMENT OF INTERNAL COMPONENTS KIT (3) WILL HAVE TO BE ORDERED

ITEM	KIT NUMBER	DESCRIPTION	ITEM	KIT NUMBER	DESCRIPTION
1	7803-520-010	COMPLETE REBUILD KIT	3	7803-522-010	BONNET / STEM REPLACEMENT
2	7803-521-010	INTERNAL REPAIR KIT	4	7801-503-010	CHECK VALVE / STRAINER KIT

ITEM	DESCRIPTION	ITEM	DESCRIPTION	ITEM	DESCRIPTION
5	ADJUSTMENT KNOB	11	ADJUSTMENT STEM O-RING	17	LOWER SPRING
6	CUP POINT SET SCREW	12	UPPER SPRING	18	INLET SCREEN (x 2)
7	HIGH TEMPERATURE LIMIT STOP	13	SHUTTLE	19	CHECK VALVE (x 2)
8	VALVE BONNET	14	SHUTTLE O-RING	20	CHECK VALVE BONNET O-RING (x 2)
9	BONNET O-RING	15	THERMOSTATIC MOTOR	21	CHECK VALVE BONNET (x 2)
10	ADJUSTMENT STEM	16	FUNNEL		

FOR TECHNICAL ASSISTANCE

1.800.743.8259

fieldservice@acorneng.com

NOTES TO THE INSTALLER:

- 1. Please leave this documentation with the owner of the fixture when finished.**
- 2. Please read this entire booklet before beginning the installation.**
- 3. Check your installation for compliance with plumbing and other applicable codes.**

LIMITED WARRANTY

UNITED STATES AND CANADA

Acorn Controls warrants that its products are free from defects in material or workmanship under normal use and service for a period of one year from date of shipment. Acorn's liability under this warranty shall be discharged solely by replacement or repair of defective material, provided Acorn is notified in writing within one year from date of shipment, F.O.B. Industry, California.

This warranty does not cover installation or labor charges and does not apply to materials, which have been damaged by other causes such as mishandling or improper care or abnormal use. The repair or replacement of the defective materials shall constitute the sole remedy of the Buyer and the sole remedy of Acorn under this warranty. Acorn shall not be liable under any circumstances for incidental, consequential or direct charges caused by defects in materials, or any delay in the repair or replacement thereof. This warranty is in lieu of all other warranties expressed or implied. Product maintenance instructions are issued with each unit and disregard or non-compliance with these instructions will constitute an abnormal use condition and void the warranty.