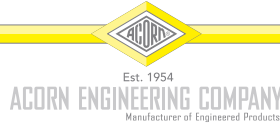


Enviro-Glaze®



Color Selection



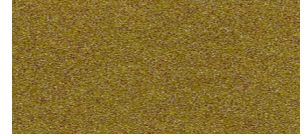
Silver Sage Patina
EG-01 *



Quicksilver
EG-02 *



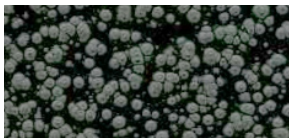
Autumn Bronze
EG-03 *



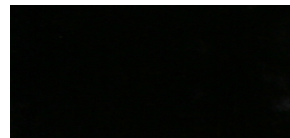
Yukon Brass
EG-04 *



River-Rock Granite
EG-05 *



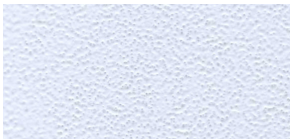
Raindrop
EG-06 *



Onyx (black)
EG-07 *



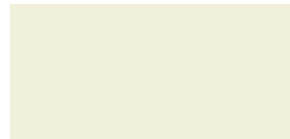
Textured Onyx (black)
EG-08 *



Diamond White
EG-09 *



Snow White
EG-10 *



Pearl White
EG-11 *



Solar Flame (yellow)
EG-12 *



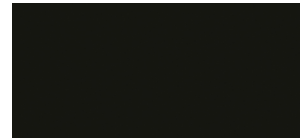
Alpine Lake (blue)
EG-13 *



Firehouse Red
EG-15 *



Lunar Blue
EG-18



Matte Black
EG-22



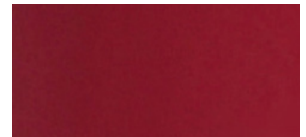
Granite
EG-25



Matte White
EG-26 *



Textured Fairway Green
EG-27 *



Textured Firehouse Red
EG-28 *



Textured Alpine Lake
EG-29 *

* Suitable for Outdoor Use

Note: Printed color swatches may differ slightly from actual
Enviro-Glaze® coating. Contact your local representative for samples.

L1000533
6/2014

Colorful Stainless Steel Fixtures Will Enhance Any Environment!

Why use Enviro-Glaze®?

Acorn Engineering Company has developed a color coating system which will allow you to purchase durable stainless steel fixtures in designer colors. Enviro-Glaze® is a superior finish which gives you a colorful and functional alternative to a stainless steel finish.

What is Enviro-Glaze®?

Enviro-Glaze® is a smooth or textured hard coating that endures impact, will not bubble, and is chip-resistant. The coating is an electrostatically sprayed powder that is applied to the outside of the stainless steel fixture, then cured at a temperature in excess of 400°F. Vigorous inspection during every step of the production process ensures that the finish on every fixture meets Acorn's high quality standards.

How should Enviro-Glaze® be cleaned and maintained?

Acorn's Enviro-Glaze® finish creates a beautiful surface that is easily cleaned, maintained and kept in a sanitary condition. A solution of warm water and mild soap is all that is necessary for cleaning the unit.*

Available Colors:

Silver Sage Patina
Quicksilver
Autumn Bronze
Yukon Brass
River-Rock Granite
Raindrop
Onyx

Textured Onyx
Diamond White
Snow White
Pearl White
Solar Flame
Alpine Lake
Firehouse Red

Lunar Blue
Matte Black
Granite
Matte White
Textured Fairway Green
Textured Firehouse Red
Textured Alpine Lake

* Long exposure to ultra-violet rays of the sun may cause chalking; however, should this occur, use of a mild furniture wax will remove residue and restore the original luster.



(800) 488-8999 / www.acorneng.com / email: info@acorneng.com
P.O. Box 3527 • 15125 Proctor Ave. • City of Industry, CA 91744-0527 U.S.A. • (626) 336-4561