



Whitehall Manufacturing®
Manufacturer of Healthcare and Rehabilitation Products since 1946

Division of
Acom Engineering Company®



A MEMBER OF



Full Body Immersion Tanks

Use



F Series 260 Gallon Stationary Full Body Immersion Tank

F-260-S



F-260-S

Whitehall Model F-260-S Full Body Immersion Tank is recommended to assist in the debridement of burn patients and others requiring carefully controlled water temperature and/or total immersion hydrotherapy.

Tank Capacity is 260 gallons.

Whirlpool Tank is 95"L x 41"W x 22"D and is seamless welded construction, fabricated from heavy gauge, type 304 stainless steel, polished to a satin finish. Tank bottom is coved (rounded) design with a reinforced stainless steel base supported by adjustable stainless steel legs. Tank fittings are two 1-1/4" NPT tube overflows, one 1-1/4" NPT filler spout, one lever operated quick open/close drain valve and an adjustable head rest.

Turbine Assembly functions as agitator. It is equipped with Underwriters Laboratory listed 1/2 HP jet pump motor protected with an ABS plastic shell, automatic thermal overload protector, and lifetime-sealed bearings. All parts contacting the water are stainless steel, chrome plated brass or bronze.

Turbine Raising and Lowering Device permits adjustments of desired height and direction of water agitation towards the area of the body during Whirlpool use. It is spring balanced and provided with a locking device.

Thermometer is provided with a dual scale, adjustable calibration, and a stem inserts into a retainer to prevent rattle during whirlpool agitation.

GUIDE SPECIFICATION

Provide Whitehall Station Full Body Immersion Tank (specify model number and options) with a 260-gallon capacity, 95"L x 41"W x 22"D. Whirlpool shall be fabricated from heavy gauge, type 304 stainless steel. Construction shall be seamless welded and exposed surfaces shall be polished to satin finish. Tank bottom shall be a rounded cove design and shall be reinforced with a stainless steel base supported by stainless steel legs. Provide a turbine assembly with raising and lowering device which functions as an agitator and permits adjustments of desired height, direction of water agitation, and can be locked into place. Turbine assembly shall be UL listed 1/2 HP jet pump motor with automatic thermal overload protector and lifetime-sealed bearings. Provide a thermometer with a stem retainer to prevent rattle when whirlpool is in operation. An adjustable headrest assembly is also provided.

Please visit www.whitehallmfg.com
for most current specifications.



Whitehall Mfg. • P.O. Box 3527 • City of Industry, CA 91744 • (800) 591-9280 • (626) 968-6681

F-260-S

REV: 07/03/2024



Whitehall Manufacturing®
Manufacturer of Healthcare and Rehabilitation Products since 1946

Full Body Immersion Tanks

MODEL NUMBER AND OPTION SELECTIONS

Series

☒ F Full Body Immersion Tank

Capacity

☒ -260 Gallons

Type

☒ -S Stationary Whirlpool

Turbine Electrical Requirements

☐ 115VAC / 50Hz ☐ 115VAC / 60HZ

☐ 230VAC / 50Hz ☐ 230VAC / 60HZ

Country of Use _____

For Mixing Valve:

Refer to supplemental MXT15-OTG and DU-1 sheet for details.

Suffix Options (See Whirlpool Options Section for Details)

- ☐ -ECR Electronic Cord Reel with 25' Cord
- ☐ -GFI Ground Fault Interrupter
- ☐ -HR Head Rest, Adjustable
- ☐ -PHS-10 Bath Stretcher Lift
- ☐ -PHS-20 Bath Chair Lift
- ☐ -PHS-30 Combination Chair and Stretcher Lift

ELECTRIC REQUIREMENTS:

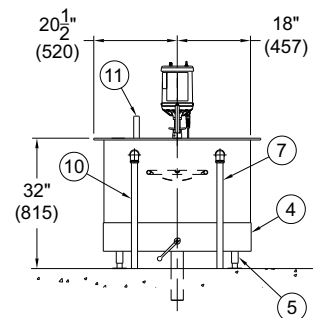
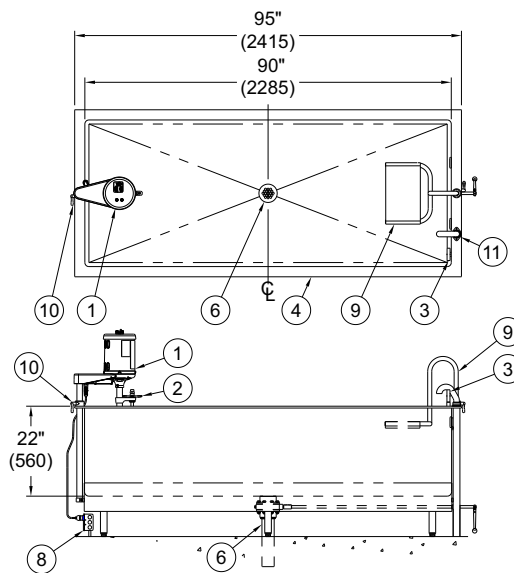
Amps: 6.9/6.2 Hertz: 50/60
Volts: 115 GFI Receptacle

ELECTRIC REQUIREMENTS:

Amps: 3.5/3.1 Hertz: 50/60
Volts: 230 GFI Receptacle

Certified per US & Canadian
Medical Standards; UL
60601-1 & CSA C22.2 No.
601.1

Certified per
European Standards;
IEC 60601-1



STATIONARY F-260-S IMMERSION TANK

NOTES:

- 1. 1/2 HP Jet Pump Motor
- 2. Variable Pressure Control
- 3. Thermometer
- 4. Stainless Steel Tank
- 5. Adjustable Supporting Legs
- 6. 3" Drain Valve Assembly
- 7. Overflow Assemblies (2)
- 8. GFI Receptacle by Others
- 9. Adjustable Headrest Assembly
- 10. Turbine Raising & Lowering Device
- 11. Filler Spout w/ 1-1/4" NPT

WARNING: Cancer and Reproductive Harm - www.P65Warnings.ca.gov

All dimensions are nominal and subject to manufacturer's change without notice. Whitehall assumes no responsibility for use of void or superseded data. © Whitehall Manufacturing, Member of Morris Group International. Please visit www.whitehallmfg.com for most current specifications.

SELECTION SUMMARY & APPROVAL FOR MANUFACTURING

Model Number & Options _____ Quantity _____
Company _____ Date _____
Contact _____ Title _____
Approval for Manufacturing/Signature _____

Whitehall Mfg. • P.O. Box 3527 • City of Industry, CA 91744 • (800) 591-9280 • (626) 968-6681

F-260-S

REV: 07/03/2024