



Whitehall Manufacturing®
Manufacturer of Healthcare and Rehabilitation Products since 1946

Division of
Acom Engineering Company®



A MEMBER OF



Full Body Immersion Tanks

Use



F Series 270 Gallon Stationary Full Body Immersion Tank

**(Hubbard Tank)
F-270-S**



F-270-S

Whitehall Model F-270 Full Body Immersion Tank is recommended to facilitate hydrotherapy of upper and lower extremities permitting patients full body immersion, room for body motion and exercise. This Hubbard style tank with figure "8" configuration allows therapists easy access to assure patient comfort.

Tank Capacity is 270 gallons

Hubbard Tank figure "8" configuration is overall 93"L x 64"W x 22"D and is seamless welded construction, fabricated from heavy gauge, type 304 stainless steel, polished to a satin finish. Tank bottom is coved (rounded) design for effective cleaning. Tank has a reinforced stainless steel base supported by adjustable stainless steel legs. Tank fittings are two 1-1/4" OD overflows, one 1-1/4" NPT filler spout, one lever operated quick open/close drain valve and an adjustable headrest.

Turbine Raising and Lowering Device permits adjustment of desired height and direction of water agitation towards the area of the body during Whirlpool use. It is spring balanced and provided with a locking device.

Twin Turbine Assemblies are mounted on carriages with automatic counterbalance. Assemblies may be moved along the tank length for the most advantageous position. Each assembly is equipped with Underwriters Laboratory listed 1/2 HP jet pump motor protected with an ABS plastic shell, automatic thermal overload protector, and lifetime-sealed bearings. All parts contacting the water are stainless steel, chrome plated brass or bronze.

Thermometer is provided with a dual scale, adjustable calibration, and a stem inserts into a retainer to prevent rattle during whirlpool agitation.

GUIDE SPECIFICATION

Provide Whitehall Stationary Full Body Immersion Tank with figure "8" configuration (specify model number and options) with a 270-gallon capacity, 93"L x 64"W x 22"D. Hubbard tank shall be fabricated from heavy gauge, type 304 stainless steel. Construction shall be seamless welded and exposed surfaces shall be polished to a satin finish. Tank bottom shall be a seamless rounded coved design and shall be reinforced with a stainless steel base supported by stainless steel legs that are adjustable. Provide twin turbine assemblies mounted on carriages with automatic counterbalance. Each turbine assembly with raising and lowering device shall permit adjustment of desired height, direction of water agitation, and locking in place. Turbine assemblies shall have UL listed 1/2 HP jet pump motor with automatic thermal overload protector and lifetime-sealed bearings. Provide a thermometer with a stem retainer to prevent rattle when whirlpool is in operation. An adjustable headrest assembly is also provided.

Please visit www.whitehallmfg.com
for most current specifications.



Whitehall Mfg. • P.O. Box 3527 • City of Industry, CA 91744 • (800) 591-9280 • (626) 968-6681

F-270-S

REV: 07/03/2024



Whitehall Manufacturing®
Manufacturer of Healthcare and Rehabilitation Products since 1946

Full Body Immersion Tanks

MODEL NUMBER AND OPTION SELECTIONS

Series

☒ F Full Body Immersion Tank

Capacity

☒ -270 Gallons

Type

☒ -S Stationary Whirlpool

Turbine Electrical Requirements

☐ 115VAC / 50Hz ☐ 115VAC / 60HZ

☐ 230VAC / 50Hz ☐ 230VAC / 60HZ

Country of Use _____

For Mixing Valve:

Refer to supplemental MXT15-OTG and DU-1 sheet for details.

Suffix Options (See Whirlpool Options Section for Details)

- | | |
|----------------------------------|--------------------------------------|
| <input type="checkbox"/> -ECR | Electronic Cord Reel with 25' Cord |
| <input type="checkbox"/> -GFI | Ground Fault Interrupter |
| <input type="checkbox"/> -HR | Head Rest, Adjustable |
| <input type="checkbox"/> -PHS-10 | Bath Stretcher Lift |
| <input type="checkbox"/> -PHS-20 | Bath Chair Lift |
| <input type="checkbox"/> -PHS-30 | Combination Chair and Stretcher Lift |

ELECTRIC REQUIREMENTS:

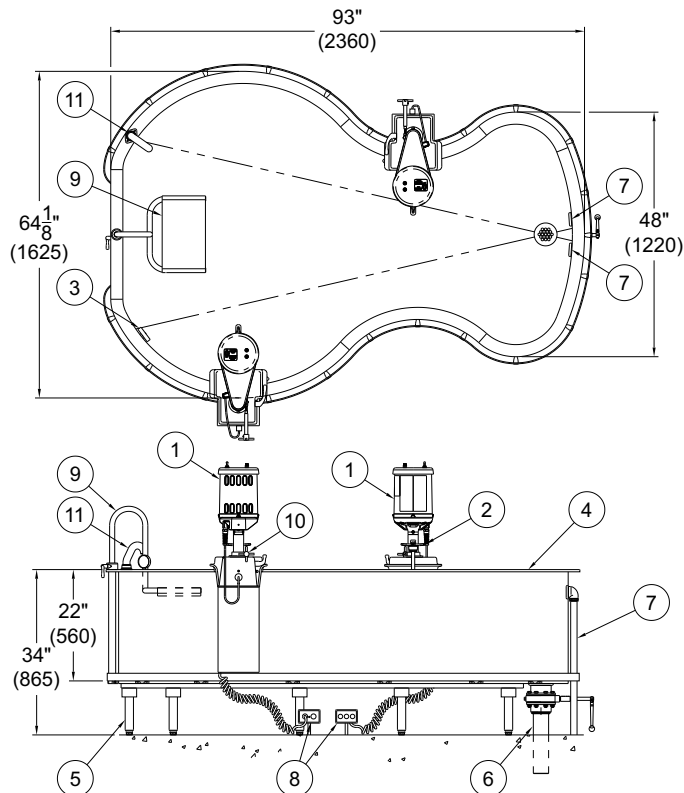
Amps: 6.9/6.2 Hertz: 50/60
Volts: 115 GFI Receptacle

ELECTRIC REQUIREMENTS:

Amps: 3.5/3.1 Hertz: 50/60
Volts: 230 GFI Receptacle

Certified per US & Canadian
Medical Standards; UL
60601-1 & CSA C22.2 No.
601.1

Certified per
European Standards;
IEC 60601-1



NOTES:

1. 1/2 HP Jet Pump Motors (2)
2. Variable Pressure Control
3. Thermometer
4. Stainless Steel Tank
5. Adjustable Supporting Legs
6. 3" Drain Valve Assembly
7. Overflow Assemblies (2)
8. GFI Receptacles (2) By Others
9. Adjustable Headrest Assembly
10. Turbine Raising & Lowering Device
11. Filler Spout with 1-1/2" O.D. Tube Assembly

WARNING: Cancer and Reproductive Harm - www.P65Warnings.ca.gov

SELECTION SUMMARY & APPROVAL FOR MANUFACTURING

Model Number & Options _____ Quantity _____
Company _____ Date _____
Contact _____ Title _____
Approval for Manufacturing/Signature _____

All dimensions are nominal and subject to manufacturer's change without notice. Whitehall assumes no responsibility for use of void or superseded data. © Whitehall Manufacturing, Member of Morris Group International. Please visit www.whitehallmfg.com for most current specifications.

Whitehall Mfg. • P.O. Box 3527 • City of Industry, CA 91744 • (800) 591-9280 • (626) 968-6681

F-270-S

REV: 07/03/2024