



**Whitehall Manufacturing®**  
Manufacturer of Healthcare and Rehabilitation Products since 1946

Division of  
Acom Engineering Company®



A MEMBER OF



## Full Body Immersion Tanks

Use



# F Series 300 Gallon Stationary Full Body Immersion Tank

**F-300-S**



F-300-S

**Whitehall Model F-300-S Full Body Immersion Tank** is recommended to assist in the debridement of burn patients and others requiring carefully controlled water temperature and/or total immersion hydrotherapy.

**Tank Capacity** is 300 gallons.

**Whirlpool Tank** is 89"L x 50"W x 22"D and is seamless welded construction, fabricated from heavy gauge, type 304 stainless steel, polished to a satin finish. Tank bottom is coved (rounded) design for effective cleaning and has a reinforced stainless steel base supported by adjustable stainless steel legs. Tank fittings are two 1-1/4" NPT tube overflows, one 1-1/4" NPT filler spout, one lever operated quick open/close drain valve and an adjustable headrest.

**Turbine Assembly** functions as an agitator. It is equipped with Underwriters Laboratory listed 1/2 HP jet pump motor protected with an ABS plastic shell, automatic thermal overload protector, and lifetime-sealed bearings. All parts contacting the water are stainless steel, chrome plated brass or bronze.

**Turbine Raising and Lowering Device** permits adjustments of desired height and direction of water agitation towards the area of the body during Whirlpool use. It is spring balanced and provided with a locking device.

**Thermometer** is provided with a dual scale, adjustable calibration, and a stem inserts into a retainer to prevent rattle during whirlpool agitation.

### GUIDE SPECIFICATION

Provide Whitehall Station Full Body Immersion Tank (specify model number and options) with a 300-gallon capacity, 89"L x 50"W x 22"D. Whirlpool shall be fabricated from heavy gauge, type 304 stainless steel. Construction shall be seamless welded and exposed surfaces shall be polished to satin finish. Tank bottom shall be a rounded cove design and shall be reinforced with a stainless steel base supported by stainless steel legs. Provide a turbine assembly with raising and lowering device which functions as an agitator and permits adjustments of desired height, direction of water agitation, and can be locked into place. Turbine assembly shall be UL listed 1/2 HP jet pump motor with automatic thermal overload protector, and lifetime-sealed bearings. Provide a thermometer with a stem retainer to prevent rattle when whirlpool is in operation. An adjustable headrest assembly is also provided.

Please visit [www.whitehallmfg.com](http://www.whitehallmfg.com)  
for most current specifications.



Whitehall Mfg. • P.O. Box 3527 • City of Industry, CA 91744 • (800) 591-9280 • (626) 968-6681

**F-300-S**

REV: 07/03/2024



**Whitehall Manufacturing®**  
Manufacturer of Healthcare and Rehabilitation Products since 1946

## Full Body Immersion Tanks

### MODEL NUMBER AND OPTION SELECTIONS

#### Series

☒ F Full Body Immersion Tank

#### Capacity

☒ -300 Gallons

#### Type

☒ -S Stationary Whirlpool

#### Turbine Electrical Requirements

☐ 115VAC / 50Hz ☐ 115VAC / 60HZ

☐ 230VAC / 50Hz ☐ 230VAC / 60HZ

Country of Use \_\_\_\_\_

#### For Mixing Valve:

Refer to supplemental MXT15-OTG and DU-1 sheet for details.

#### Suffix Options (See Whirlpool Options Section for Details)

- ☐ -ECR Electronic Cord Reel with 25' Cord
- ☐ -GFI Ground Fault Interrupter
- ☐ -HR Head Rest, Adjustable
- ☐ -PHS-10 Bath Stretcher Lift
- ☐ -PHS-20 Bath Chair Lift
- ☐ -PHS-30 Combination Chair and Stretcher Lift

#### ELECTRIC REQUIREMENTS:

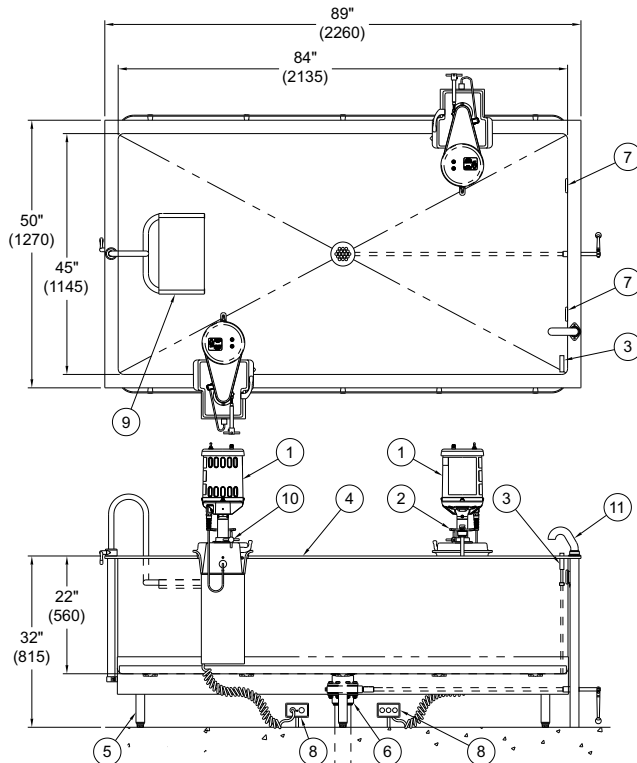
Amps: 6.9/6.2 Hertz: 50/60  
Volts: 115 GFI Receptacle

#### ELECTRIC REQUIREMENTS:

Amps: 3.5/3.1 Hertz: 50/60  
Volts: 230 GFI Receptacle

Certified per US & Canadian  
Medical Standards; UL  
60601-1 & CSA C22.2 No.  
601.1

Certified per  
European Standards;  
IEC 60601-1



STATIONARY F-300-S IMMERSION TANK

#### NOTES:

1. 1/2 HP Jet Pump Motors (2)
2. Variable Pressure Control
3. Thermometer
4. Stainless Steel Tank
5. Adjustable Supporting Legs
6. 3" Drain Valve Assembly
7. Overflow Assemblies (2)
8. GFI Receptacles (2) by Others
9. Adjustable Headrest Assembly
10. Turbine Raising & Lowering Device
11. Filler Spout w/ 1-1/2" O.D. Tube Assembly

**WARNING:** Cancer and Reproductive Harm - [www.P65Warnings.ca.gov](http://www.P65Warnings.ca.gov)

### SELECTION SUMMARY & APPROVAL FOR MANUFACTURING

Model Number & Options \_\_\_\_\_ Quantity \_\_\_\_\_  
Company \_\_\_\_\_ Date \_\_\_\_\_  
Contact \_\_\_\_\_ Title \_\_\_\_\_  
Approval for Manufacturing/Signature \_\_\_\_\_

All dimensions are nominal and subject to manufacturer's change without notice. Whitehall assumes no responsibility for use of void or superseded data. © Whitehall Manufacturing, Member of Morris Group International. Please visit [www.whitehallmfg.com](http://www.whitehallmfg.com) for most current specifications.

Whitehall Mfg. • P.O. Box 3527 • City of Industry, CA 91744 • (800) 591-9280 • (626) 968-6681

**F-300-S**

REV: 07/03/2024