



Whitehall Manufacturing®
Manufacturer of Healthcare and Rehabilitation Products since 1946

Division of
Acom Engineering Company®



A MEMBER OF



Lo-Boy Whirlpools

Use



L Series 75 Gallon Stationary Whirlpool

L-75-S



L-75-S

Whitehall L-75-S Stationary Whirlpool is recommended to facilitate hydrotherapy of extremities, hip and back area. It is ideal for pediatric and geriatric applications imparting a greater degree of patient comfort and safety.

Tank Capacity is 75 gallons.

Whirlpool Tank is 52"L x 24"W x 18"D and is seamless welded construction, fabricated from heavy gauge, type 304 stainless steel, polished to a satin finish. Tank rim is reinforced with a concealed stainless steel rod. Tank bottom is seamless, coved (rounded) design for effective cleaning. Tank is also provided with an extended stainless steel skirt flush to the floor line to conceal internal drain piping. A 2" Combination Drain Overflow and a Filler Spout are provided.

Turbine Raising and Lowering Device permits adjustment of desired height and direction of water agitation towards the area of the body during Whirlpool use. It is spring balanced and provided with a locking device.

Turbine Assembly is equipped with Underwriters Laboratory listed 1/2 HP jet pump motor protected with an ABS plastic shell, automatic thermal overload protector, and lifetime-sealed bearings. All parts contacting the water are stainless steel, chrome plated brass or bronze.

Thermometer is provided with a dual scale, adjustable calibration, and a stem inserts into a retainer to prevent rattle during whirlpool agitation.

GUIDE SPECIFICATIONS

Provide Whitehall Stationary Whirlpool (specify model number and options) with a 75-gallon capacity, 52"L x 24"W x 18"D. Whirlpool shall be fabricated from heavy gauge, type 304 stainless steel. Construction shall be seamless welded and exposed surfaces shall be polished to satin finish. Tank shall have a reinforced rim and shall be fitted with a stainless steel skirt flush to the floor line. Bottom of tank shall be a seamless, rounded coved design. Provide a 2" combination drain and overflow, and a filler spout. Provide a turbine assembly with raising and lowering device which functions as an agitator and permits adjustment of desired height, direction of water agitation, and can be locked into place. Turbine assembly shall be UL listed 1/2 HP jet pump motor with automatic thermal overload protector and lifetime-sealed bearings. Provide a thermometer with a stem retainer to prevent rattle when whirlpool is in operation.

Please visit www.whitehallmfg.com
for most current specifications.



Whitehall Mfg. • P.O. Box 3527 • City of Industry, CA 91744 • (800) 591-9280 • (626) 968-6681

L-75-S

REV: 07/02/2024



Whitehall Manufacturing®
Manufacturer of Healthcare and Rehabilitation Products since 1946

Lo-Boy Whirlpools

MODEL NUMBER AND OPTION SELECTIONS

Series

☒ L Lo-Boy Series

Capacity

☒ -75 Gallons

Type

☒ -S Stationary Whirlpool

Turbine Electrical Requirements

☐ 115VAC / 50Hz ☐ 115VAC / 60Hz
☐ 230VAC / 50Hz ☐ 230VAC / 60Hz

Country of Use _____

For Mixing Valve:

Refer to supplemental MXT15-OTG and DU-1 sheet for details.

Suffix Options (See Whirlpool Options Section for Details)

- ☐ -AS3 Adjustable Suspension Seat
☐ -EG Enviro-Glaze® Color Powder Coating - Specify Color: <https://www.whitehallmfg.com/enviro-glaze>
☐ -GFI Ground Fault Interrupter
☐ -LOGO Applied Logos: Team, Facility, Company Logo
☐ -HR Head Rest, Adjustable
☐ -RS Reclining Seat
☐ -SDO Separate Drain Overflow Assembly
☐ -TTS2 Tank Top Seat

ELECTRIC REQUIREMENTS:

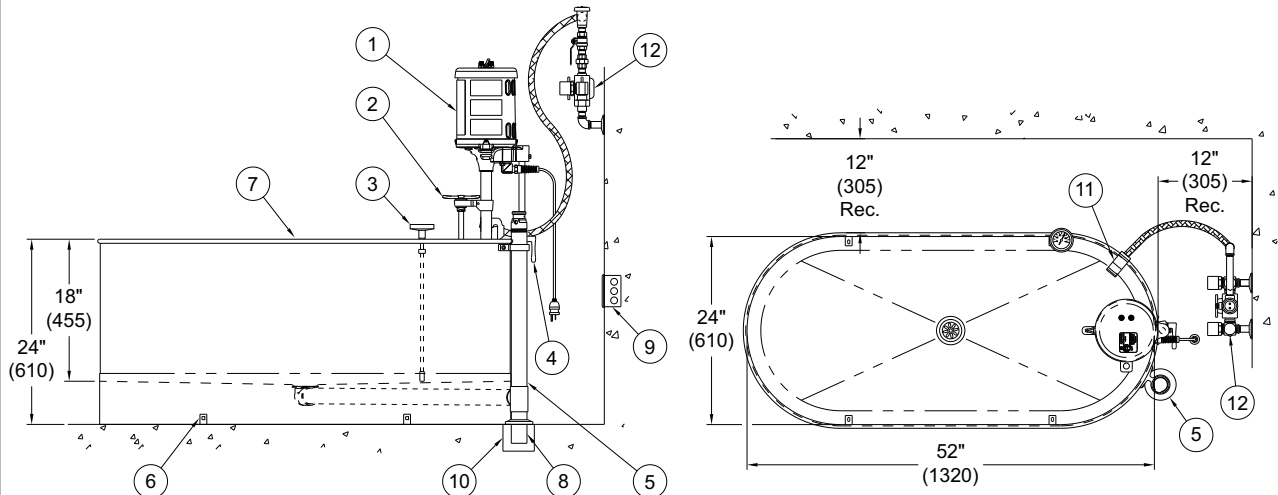
Amps: 6.9/6.2 Hertz: 50/60
Volts: 115 GFI Receptacle

ELECTRIC REQUIREMENTS:

Amps: 3.5/3.1 Hertz: 50/60
Volts: 230 GFI Receptacle

Certified per US & Canadian Medical Standards; UL 60601-1 & CSA C22.2 No. 601.1

Certified per European Standards; IEC 60601-1



STATIONARY L-75-S SERIES WHIRLPOOL

NOTES:

- | | | |
|--------------------------------------|--|--|
| 1. 1/2 HP Jet Pump Motor | 5. Combination Drain & Overflow Assembly | 9. 3 Pole GFI Receptacle by Others |
| 2. Variable Pressure Control | 6. "L" Brackets - (4) Four Each | 10. Floor Drain by Others |
| 3. Thermometer | 7. Stainless Steel Tank | 11. Filler Spout |
| 4. Turbine Raising & Lowering Device | 8. 2" O.D. x 5" Tailpiece | 12. Mixing Valve, Shown For Reference Only |

WARNING: Cancer and Reproductive Harm - www.P65Warnings.ca.gov

SELECTION SUMMARY & APPROVAL FOR MANUFACTURING

Model Number & Options _____ Quantity _____
Company _____ Date _____
Contact _____ Title _____
Approval for Manufacturing/Signature _____

All dimensions are nominal and subject to manufacturer's change without notice. Whitehall assumes no responsibility for use of void or superseded data © Whitehall Manufacturing, Member of Morris Group International. Please visit www.whitehallmfg.com for most current specifications.

Whitehall Mfg. • P.O. Box 3527 • City of Industry, CA 91744 • (800) 591-9280 • (626) 968-6681

L-75-S

REV: 07/02/2024