



Whitehall Manufacturing®
Manufacturer of Healthcare and Rehabilitation Products since 1946

Division of
Acorn Engineering Company®



A MEMBER OF



Sports Whirlpools

Use



S Series 110 Gallon Mobile Whirlpool

S-110-M



S-110-M

Whitehall S-110-M Mobile Whirlpools are recommended to facilitate hydrotherapy of sports injuries allowing coverage of the extremities, hips and back area.

Tank Capacity is 110 gallons.

Whirlpool Tank is 56"L x 24"W x 25"D and is seamless welded construction, fabricated from heavy gauge, type 304 stainless steel, polished to a satin finish. Tank rim is reinforced with a concealed stainless steel rod. Tank bottom is a seamless, coved (rounded) design for effective cleaning.

Heavy Duty Swivel Casters support all mobile models. Rear pair of casters are lockable for stabilizing whirlpool during use.

Turbine Raising and Lowering Device permits adjustment of desired height and direction of water agitation towards the area of the body during Whirlpool use. It is spring balanced and provided with a locking device.

Turbine Assembly functions both as agitator and emptying device. It is equipped with Underwriters Laboratory listed 1/2 HP jet pump motor protected with an ABS plastic shell, automatic thermal overload protector, and lifetime-sealed bearings. All parts contacting the water are stainless steel, chrome plated brass or bronze.

Drain option -SDP has a bottom drain, leading to a separate, concealed water evacuation pump. A hose is attached to the side of the unit to facilitate the evacuation.

Thermometer is provided with a dual scale, adjustable calibration, and a stem inserts into a retainer to prevent rattle during whirlpool agitation.

GUIDE SPECIFICATIONS

Provide Whitehall Mobile Whirlpool (specify model number and options) with a 110-gallon capacity, 56"L x 24"W x 25"D. Whirlpool shall be fabricated from heavy gauge, type 304 stainless steel. Construction shall be seamless welded and exposed surfaces shall be polished to satin finish. Bottom of tank shall be a seamless, rounded coved design. Whirlpool shall have heavy duty swivel casters with locking device on rear pair of casters. Provide a turbine assembly with raising and lowering device which functions both as agitator and emptying device, permits adjustment of desired height, direction of water agitation, and can be locked into place. Turbine assembly shall be UL listed 1/2 HP jet pump motor with automatic thermal overload protector and lifetime-sealed bearings. Provide a thermometer with a stem retainer to prevent rattling when whirlpool is in operation.

Please visit www.whitehallmfg.com
for most current specifications.



Whitehall Mfg. • P.O. Box 3527 • City of Industry, CA 91744 • (800) 591-9280 • (626) 968-6681

S-110-M

REV: 07/03/2024



Whitehall Manufacturing®
Manufacturer of Healthcare and Rehabilitation Products since 1946

Sports Whirlpools

MODEL NUMBER AND OPTION SELECTIONS

Series

☒ S Sports Series

Capacity

☒ -110 Gallons

Type

☒ -M Mobile Whirlpool

Turbine Electrical Requirements

☐ 115VAC / 50Hz ☐ 115VAC / 60Hz

☐ 230VAC / 50Hz ☐ 230VAC / 60Hz

Country of Use _____

For Mixing Valve:

Refer to supplemental MXT15-OTG and DU-1 sheet for details.

Suffix Options (See Whirlpool Options Section for Details)

- ☐ -ADH Auxiliary Drain Hose Assembly
- ☐ -AS2 Adjustable Suspension Seat
- ☐ -EG Enviro-Glaze® Color Powder Coating - Specify Color: _____
<https://www.whitehallmfg.com/enviro-glaze>
- ☐ -GFI Ground Fault Interrupter
- ☐ -LOGO Applied Logos: Team, Facility, Company Logo
- ☐ -SDP Separate Drain Pump
- ☐ -TTS2 Tank Top Seat

ELECTRIC REQUIREMENTS:

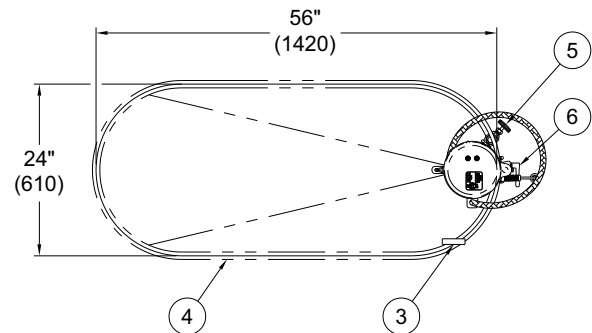
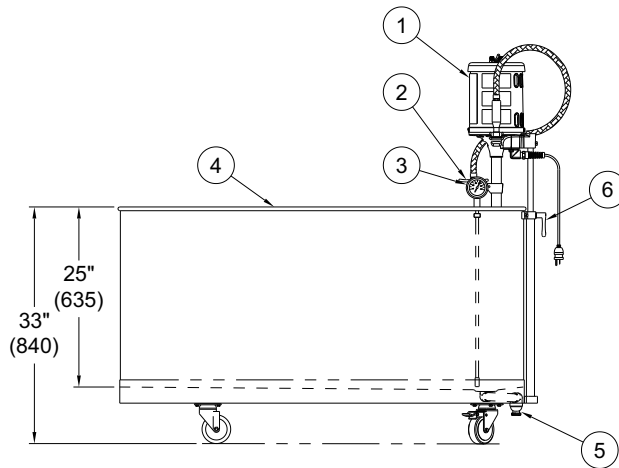
Amps: 6.9/6.2 Hertz: 50/60
Volts: 115 GFI Receptacle

ELECTRIC REQUIREMENTS:

Amps: 3.5/3.1 Hertz: 50/60
Volts: 230 GFI Receptacle

Certified per US & Canadian
Medical Standards; UL
60601-1 & CSA C22.2 No.
601.1

Certified per
European Standards;
IEC 60601-1



MOBILE S-110-M SERIES WHIRLPOOL

NOTES:

1. 1/2 hp Jet Pump Motor
2. Variable Pressure Control
3. Thermometer

4. Stainless Steel Tank
5. Auxiliary Drain Valve
6. Turbine Raising & Lowering Device

WARNING: Cancer and Reproductive Harm - www.P65Warnings.ca.gov

All dimensions are nominal and subject to manufacturer's change without notice. Whitehall assumes no responsibility for use of void or superseded data © Whitehall Manufacturing, Member of Morris Group International. Please visit www.whitehallmfg.com for most current specifications.

SELECTION SUMMARY & APPROVAL FOR MANUFACTURING

Model Number & Options _____ Quantity _____
Company _____ Date _____
Contact _____ Title _____
Approval for Manufacturing/Signature _____

Whitehall Mfg. • P.O. Box 3527 • City of Industry, CA 91744 • (800) 591-9280 • (626) 968-6681

S-110-M

REV: 07/03/2024