



**Whitehall Manufacturing®**  
Manufacturer of Healthcare and Rehabilitation Products since 1946

Division of  
Acorn Engineering Company®



A MEMBER OF



## Sports Whirlpools

Use



# S Series 110 Gallon Stationary Whirlpool with Legs

**S-110-SL**



S-110-SL

**Whitehall S-110-SL Stationary Whirlpools with Legs** are recommended to facilitate hydrotherapy of sports injuries allowing coverage of the extremities, hips and back area.

**Tank Capacity** is 110 gallons.

**Whirlpool Tank** is 56"L x 24"W x 25"D and is seamless welded construction, fabricated from heavy gauge, type 304 stainless steel, polished to a satin finish. Tank rim is reinforced with a concealed stainless steel rod. Tank bottom is a seamless, coved (rounded) design for effective cleaning. Whirlpool is fitted with adjustable stainless steel legs and gravity drain valve.

**Turbine Raising and Lowering Device** permits adjustment of desired height and direction of water agitation towards the area of the body during Whirlpool use. It is spring balanced and provided with a locking device.

**Turbine Assembly** functions both as agitator and emptying device. It is equipped with Underwriters Laboratory listed 1/2 HP jet pump motor protected with an ABS plastic shell, automatic thermal overload protector, and lifetime-sealed bearings. All parts contacting the water are stainless steel, chrome plated brass or bronze.

**Thermometer** is provided with a dual scale, adjustable calibration, and a stem inserts into a retainer to prevent rattle during whirlpool agitation.

### GUIDE SPECIFICATIONS

Provide Whitehall Mobile Whirlpool (specify model number and options) with a 110-gallon capacity, 56"L x 24"W x 25"D. Whirlpool shall be fabricated from heavy gauge, type 304 stainless steel. Construction shall be seamless welded and exposed surfaces shall be polished to satin finish. Bottom of tank shall be a seamless, rounded coved design. Whirlpool is fitted with adjustable stainless steel legs and a gravity drain valve. Provide a turbine assembly with raising and lowering device which functions both as agitator and emptying device, permits adjustment of desired height, direction of water agitation, and can be locked into place. Turbine assembly shall be UL listed 1/2 HP jet pump motor with automatic thermal overload protector and lifetime-sealed bearings. Provide a thermometer with a stem retainer to prevent rattling when whirlpool is in operation.

Please visit [www.whitehallmfg.com](http://www.whitehallmfg.com)  
for most current specifications.



Whitehall Mfg. • P.O. Box 3527 • City of Industry, CA 91744 • (800) 591-9280 • (626) 968-6681

**S-110-SL**

REV: 07/03/2024



**Whitehall Manufacturing®**  
Manufacturer of Healthcare and Rehabilitation Products since 1946

## Sports Whirlpools

### MODEL NUMBER AND OPTION SELECTIONS

#### Series

☒ S Sports Series

#### Capacity

☒ -110 Gallons

#### Type

☒ -SL Stationary Whirlpool with Legs

#### Turbine Electrical Requirements

☐ 115VAC / 50Hz ☐ 115VAC / 60HZ

☐ 230VAC / 50Hz ☐ 230VAC / 60HZ

Country of Use \_\_\_\_\_

#### For Mixing Valve:

Refer to supplemental MXT15-OTG and DU-1 sheet for details.

### Suffix Options (See Whirlpool Options Section for Details)

- ☐ -ARS Arm Rest Support
- ☐ -AS2 Adjustable Suspension Seat
- ☐ -EG Enviro-Glaze® Color Powder Coating - Specify Color: \_\_\_\_\_  
<https://www.whitehallmfg.com/enviro-glaze>
- ☐ -GFI Ground Fault Interrupter
- ☐ -LOGO Applied Logos: Team, Facility, Company Logo
- ☐ -SDO Separate Drain Overflow Assembly
- ☐ -TTS2 Tank Top Seat

#### ELECTRIC REQUIREMENTS:

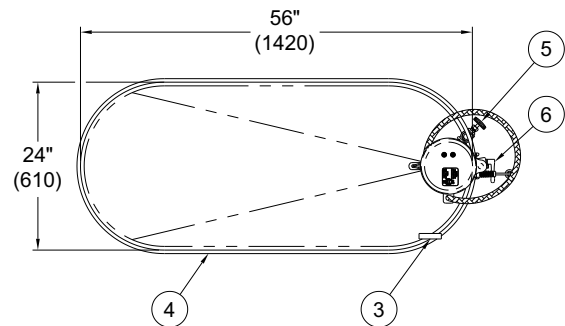
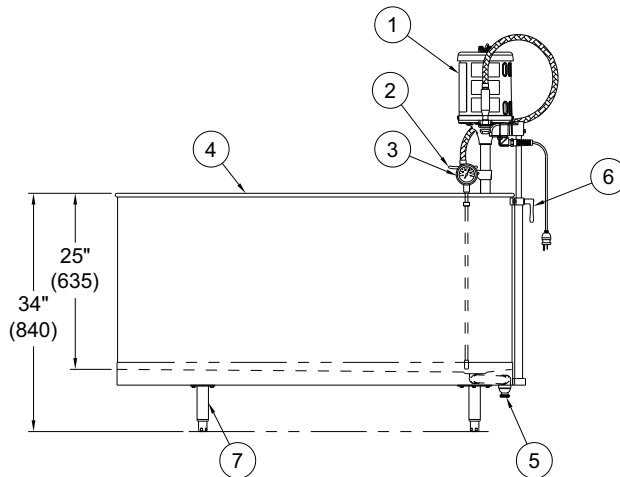
Amps: 6.9/6.2 Hertz: 50/60  
Volts: 115 GFI Receptacle

#### ELECTRIC REQUIREMENTS:

Amps: 3.5/3.1 Hertz: 50/60  
Volts: 230 GFI Receptacle

Certified per US & Canadian  
Medical Standards; UL  
60601-1 & CSA C22.2 No.  
601.1

Certified per  
European Standards;  
IEC 60601-1



### STATIONARY S-110-SL SERIES WHIRLPOOL

#### NOTES:

1. 1/2 hp Jet Pump Motor
2. Variable Pressure Control
3. Thermometer
4. Stainless Steel Tank

5. Auxiliary Drain Valve
6. Turbine Raising & Lowering Device
7. Adjustable Stainless Steel Legs

WARNING: Cancer and Reproductive Harm - [www.P65Warnings.ca.gov](http://www.P65Warnings.ca.gov)

All dimensions are nominal and subject to manufacturer's change without notice. Whitehall assumes no responsibility for use of void or superseded data. © Whitehall Manufacturing, Member of Morris Group International. Please visit [www.whitehallmfg.com](http://www.whitehallmfg.com) for most current specifications.

### SELECTION SUMMARY & APPROVAL FOR MANUFACTURING

Model Number & Options \_\_\_\_\_ Quantity \_\_\_\_\_  
Company \_\_\_\_\_ Date \_\_\_\_\_  
Contact \_\_\_\_\_ Title \_\_\_\_\_  
Approval for Manufacturing/Signature \_\_\_\_\_

Whitehall Mfg. • P.O. Box 3527 • City of Industry, CA 91744 • (800) 591-9280 • (626) 968-6681

**S-110-SL**

REV: 07/03/2024