



**Whitehall Manufacturing®**  
Manufacturer of Healthcare and Rehabilitation Products since 1946

Division of  
Acom Engineering Company®



A MEMBER OF



## Slant Back Whirlpools

Use



### **SB Series 100 Gallon Slant Back Mobile Whirlpool**

#### **SB-100-M**



SB-100-M

**Whitehall SB-100-M Slant Back Mobile Whirlpool** is recommended to facilitate hydrotherapy of extremities, hip and back area. A slant back design allows for the user to comfortably recline during Whirlpool use.

**Tank Capacity** is 100 gallons.

**Whirlpool Tank** is 76"L x 40"W x 24"D and is seamless welded construction, fabricated from heavy gauge, type 304 stainless steel, polished to a satin finish. The tank features a slant back to allow the user to recline during Whirlpool use. A 3" wide rim allows the user to also rest their arms while soaking. Tank bottom is seamless, coved (rounded) design for effective cleaning.

**Turbine Raising and Lowering Device** permits adjustment of desired height and direction of water agitation towards the area of the body during Whirlpool use. It is spring balanced and provided with a locking device.

**Turbine Assembly** functions both as agitator and emptying device. It is equipped with Underwriters Laboratory listed 1/2 HP pump motor protected with an ABS plastic shell, automatic thermal overload protector, and lifetime-sealed bearings. All parts contacting the water are stainless steel, chrome plated brass or bronze.

**Drain option -SDP** has a bottom drain, leading to a separate, concealed water evacuation pump. A hose is attached to the side of the unit to facilitate the evacuation.

**Thermometer** is provided with a dual scale, adjustable calibration. Stem inserts into a retainer to prevent rattle during whirlpool agitation.

#### **GUIDE SPECIFICATIONS**

Provide Whitehall Mobile Whirlpool (specify model number and options) with a 100-gallon capacity, 76"L x 40"W x 24"D. Whirlpool shall be fabricated from heavy gauge, type 304 stainless steel. Construction shall be seamless welded and exposed surfaces shall be polished to satin finish. The tank features a slant back to allow the user to recline to facilitate hydrotherapy. The 3" rim allows the user to rest their arms during use. Bottom of tank shall be a seamless, rounded coved design. Provide a turbine assembly with raising and lowering device which functions both as agitator and emptying device, permits adjustment of desired height, direction of water agitation, and can be locked into place. Turbine assembly shall be UL listed 1/2 HP pump motor with automatic thermal overload protector and lifetime-sealed bearings. Provide a 3" dial thermometer with a stem retainer to prevent rattle when whirlpool is in operation.

Please visit [www.whitehallmfg.com](http://www.whitehallmfg.com)  
for most current specifications.



Whitehall Mfg. • P.O. Box 3527 • City of Industry, CA 91744 • (800) 591-9280 • (626) 968-6681

**SB-100-M**

REV: 07/03/2024



**Whitehall Manufacturing®**  
Manufacturer of Healthcare and Rehabilitation Products since 1946

## Slant Back Whirlpools

### MODEL NUMBER AND OPTION SELECTIONS

#### Series

☒ SB Slant Back Series

#### Capacity

☒ -100 Gallons

#### Type

☒ -M Mobile Whirlpool

#### Turbine Electrical Requirements

☐ 115VAC / 50Hz ☐ 115VAC / 60HZ

☐ 230VAC / 50Hz ☐ 230VAC / 60HZ

Country of Use \_\_\_\_\_

#### For Mixing Valve:

Refer to supplemental MXT15-OTG and DU-1 sheet for details.

#### Suffix Options (See Whirlpool Options Section for Details)

- ☐ -ADH Auxiliary Drain Hose Assembly  
☐ -EG Enviro-Glaze® Color Powder Coating - Specify Color: <https://www.whitehallmfg.com/enviro-glaze>  
☐ -GFI Ground Fault Interrupter  
☐ -LOGO Applied Logos: Team, Facility, Company Logo  
☐ -SDP Separate Drain Pump

#### ELECTRIC REQUIREMENTS:

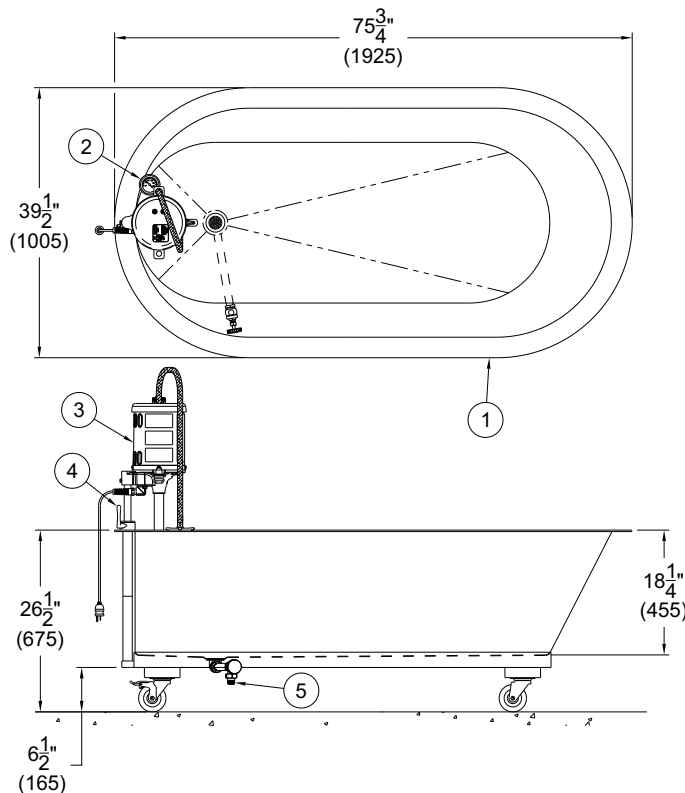
Amps: 6.9/6.2 Hertz: 50/60  
Volts: 115 GFI Receptacle

#### ELECTRIC REQUIREMENTS:

Amps: 3.5/3.1 Hertz: 50/60  
Volts: 230 GFI Receptacle

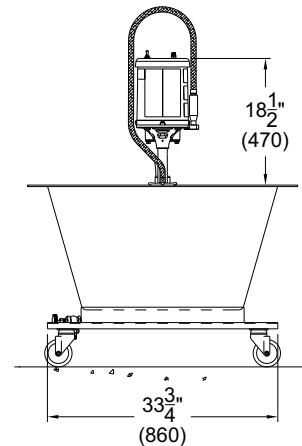
Certified per US & Canadian Medical Standards; UL 60601-1 & CSA C22.2 No. 601.1

Certified per European Standards; IEC 60601-1



#### NOTES:

1. Slant Back Whirlpool
2. Thermometer
3. 1/2" HP Pump Motor
4. Turbine Raising & Lowering Device
5. Auxiliary Drain



All dimensions are nominal and subject to manufacturer's change without notice. Whitehall assumes no responsibility for use of void or superseded data. © Whitehall Manufacturing, Member of Morris Group International. Please visit [www.whitehallmfg.com](http://www.whitehallmfg.com) for most current specifications.

**WARNING:** Cancer and Reproductive Harm - [www.P65Warnings.ca.gov](http://www.P65Warnings.ca.gov)

#### SELECTION SUMMARY & APPROVAL FOR MANUFACTURING

Model Number & Options \_\_\_\_\_ Quantity \_\_\_\_\_  
Company \_\_\_\_\_ Date \_\_\_\_\_  
Contact \_\_\_\_\_ Title \_\_\_\_\_  
Approval for Manufacturing/Signature \_\_\_\_\_

Whitehall Mfg. • P.O. Box 3527 • City of Industry, CA 91744 • (800) 591-9280 • (626) 968-6681

**SB-100-M**

REV: 07/03/2024