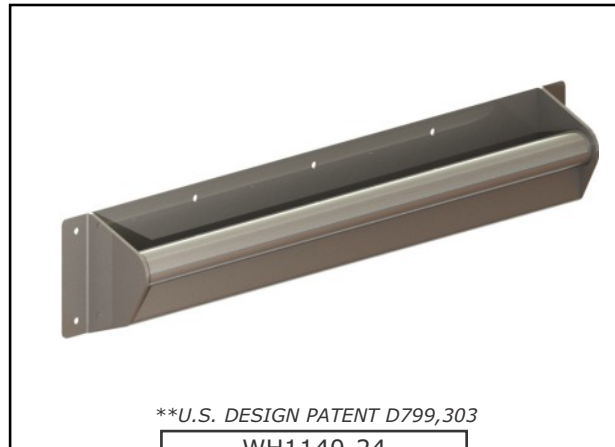




Ligature Resistant Grab Bars

Grab Bars are designed to help meet the needs of the disabled. Grab bars are constructed of 1-1/2" outer diameter type 304 stainless steel tubing with a 14 gage "V" shaped closure strip welded to the bottom of the bar. Closure plate includes intermittent welds along wall plate and small holes opposite grab bar to prevent pooling of water and allow water to drain. Exposed surfaces are polished to a satin finish. Selection of appropriate length, configuration, adequate wall backing and installation dependent on application will determine compliance for accessibility. Consult applicable codes for complete requirements.

NOTE: The Grab Bar design meets the required lengths, 1-1/2" dimensions from mounting surface and for Structural Strength requirement for both vertical and horizontal force of 250 pounds per ADA 2010 Standards. However the presence of the Closure Plate may render the Grab Bar non-compliant. Interpretation and requirements are subject to Local Code Authority.



**U.S. DESIGN PATENT D799,303

WH1140-24

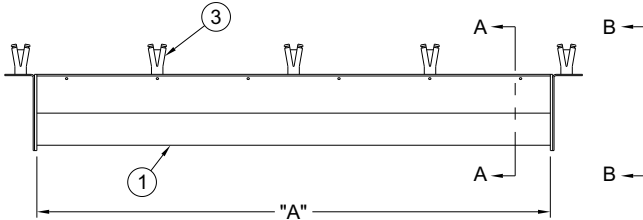
MODEL NUMBER AND OPTIONS SELECTION:

BASE MODEL NUMBER

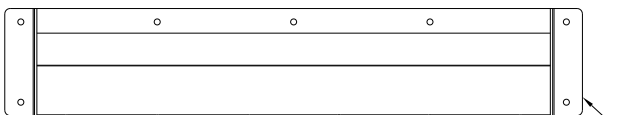
- WH1140-18 Grab Bar with "V" Closure Strip, 18" Long
- WH1140-24 Grab Bar with "V" Closure Strip, 24" Long
- WH1140-30 Grab Bar with "V" Closure Strip, 30" Long
- WH1140-36 Grab Bar with "V" Closure Strip, 36" Long
- WH1140-42 Grab Bar with "V" Closure Strip, 42" Long
- WH1140-48 Grab Bar with "V" Closure Strip, 48" Long

OPTIONS

- EG10 "Snow White" Enviro-Glaze® Powder Coating

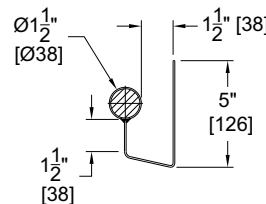


TOP VIEW

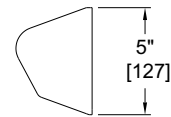


FRONT VIEW

MODEL NO.	"A"
WH1140-18	18" [457]
WH1140-24	24" [610]
WH1140-30	30" [762]
WH1140-36	36" [914]
WH1140-42	42" [1067]
WH1140-48	48" [1219]



SECTION A-A



SECTION B-B

NOTES:

1. 1-1/2" O.D. Stainless Steel Tube
2. Intermittent Welded Closure Strip w/ Anchoring Plate
3. Wall Anchors by Others

DISCLAIMER:

This product is designed to decrease the probability that it may be utilized as an apparatus for ligature. It is not a replacement for professionals who are trained in the proper evaluation, management and supervision of persons at risk of suicide.

WARNING: Cancer and Reproductive Harm - www.P65Warnings.ca.gov



(Refer to note above)



All dimensions are nominal and subject to manufacturer's change without notice. Whitehall assumes no responsibility for use of void or superseded data © Whitehall Manufacturing, Member of Morris Group International. Please visit www.whitehallmfg.com for most current specifications.

SELECTION SUMMARY & APPROVAL FOR MANUFACTURING

Model Number & Options _____ Quantity _____
 Company _____ Date _____
 Contact _____ Title _____
 Approval for Manufacturing/Signature _____