



**Whitehall
 Bariatric
 Off-Floor Toilet**

Model 2105BAR



2105BAR-T-1-PFS-EGE10

Fixture May Show Some Available Options

Bariatric Toilet - Off Floor

Toilet is arranged to be installed on a finished wall from the front side using an appropriate Bariatric Support System to be provided by others. Optional -HSBJ Big John® hinged Toilet Seat is rated at 1,200 lbs. Toilet bowl and Internal Sub-Frame are fabricated from 14 gage type 304 stainless steel, is seamless welded construction, and includes an integral contoured Seat. Fixture is rated at 1000 lbs Bariatric load when used in conjunction with an appropriately rated Bariatric Support System, provided by others.

Fixture exterior and Bowl interior has a #4 polished satin finish.

Optional -EGE Enviro-Glaze color finishes are available to powder coat exterior of Bowl and are highly recommended to ensure Patient comfort (Specify).

Toilet is Siphon Jet type with elongated Bowl manufactured to comply with ASME A112.19.3 and CSA B45.4 standards. Toilet requires a minimum of 25 PSI flow pressure and uses a minimum water consumption of 1.28 GPF. Trap has a minimum 3-1/2" seal, will pass a 2-1/8" ball and is fully enclosed. Toilet has a 1-1/2" NPT Flush Valve connection and a Gasketed Waste Outlet.

Flush Valve supply is optionally available for exposed or concealed Flush Valve styles in 1.28 GPF, 1.6 GPF or 3.5 GPF with 1-1/2" NPT connection.

GUIDE SPECIFICATION

Provide and install Whitehall Bariatric Toilet (specify model number and options) rated at 1000 lbs. Toilet bowl and Internal Sub-Frame shall be fabricated from 14 gage, type 304 stainless steel. Construction shall be seamless welded and all exposed surfaces shall have a satin finish with an integral contoured Toilet Seat. Toilet shall be concealed Siphon Jet type with an elongated Bowl and a self-draining flushing rim. Toilet shall be ASME A112.19.3 and CSA B45.4 compliant. Toilet requires a minimum of 25 PSI flow pressure and uses a minimum water consumption of 1.28 GPF. Toilet trap shall have a minimum 3-1/2" seal that shall pass a 2-1/8" diameter ball and be fully enclosed. Toilet waste outlet shall be a Gasketed Waste.

Compatible Water Closet Support

www.jrsmith.com/uploads/fileLibrary/pm0729.pdf

Please visit www.whitehallmfg.com for most current specifications.



Complies with the following standards:





WALL THICKNESS AND TYPE (Must Specify)

Thickness _____ Type _____

MODEL NUMBER AND OPTIONS SELECTION

BASE MODEL NUMBER

2105BAR Bariatric Toilet

SUPPLY (Must Specify)

- T Top (Exposed)
- W Wall (Concealed)

FIXTURE MOUNTING AND WASTE

- 1 Off-Floor, Wall Outlet
- ADA 18" Integral Seat Height

FLUSH VALVE GPF's (Must Specify)

- 1.28 GPF (HET)
- 1.6 GPF
- 3.5 GPF

FLUSH VALVE OPTIONS (Must Specify)

SEE ACORN DURA-WARE SUPPLEMENTARY MATERIAL FOR FLUSH VALVE COVERS AND BOXES

- FV Flush Valve (N/A for ADA)
- FVBO Flush Valve by Others
- FVH Flush Valve, Hydraulic
- FVL Flush Valve, ADA Lever Handle (Wall Supply)
- MVCFV Time-Trol Flush Valve (N/A for Top Supply)

TOILET SEAT OPTIONS

- HSBJ Big John® Hinged Seat 1,200 lbs Rated
 - Open Front Less Cover
 - Open Front With Cover
- HPS High Polish Integral Seat
- PFS Punched for Seat by Others

TOILET OPTIONS

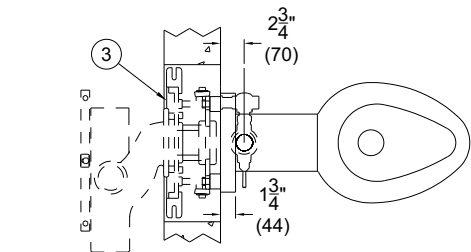
- BL Bedpan Lugs
- FT Flood-Trol (N/A w/ Top Supply)**
- FTA Flood-Trol Auto-Reset (N/A w/ Top Supply)**
- FTE Flood-Trol Electronic**

(NOTE: **Not available with Top Supply or -FM Front Mount)

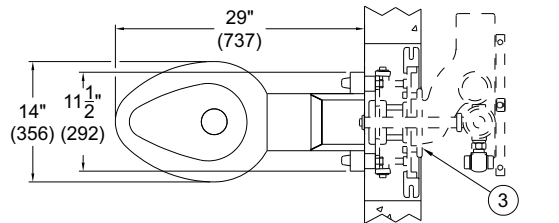
- FVT Flush Thru Wall Connector
- HET High Efficiency Toilet Design
- TF Transformer, 120VAC to 24VAC (For -MVCFV)
- TSC Toilet Shipping Cover

PRODUCT OPTIONS

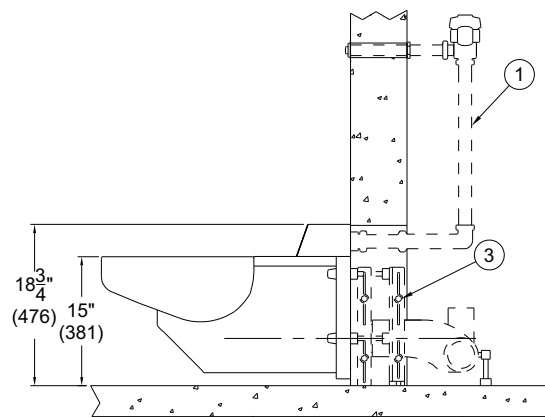
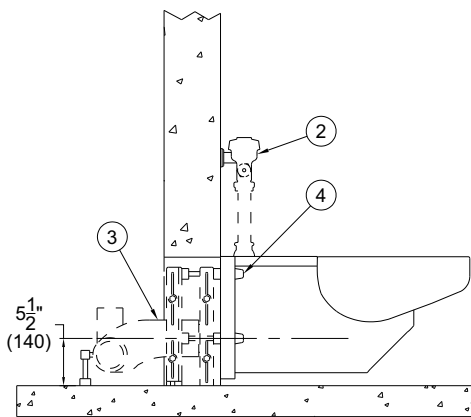
- BCN Blind Cap Nuts (4)
- CN Cap Nuts (4)
- EGE Enviro-Glaze Color Specify: _____
Toilet Exterior Only - [EG Color Selection Link](#)
- VAC AcornVac System



2105BAR-T-1



2105BAR-W-1



- NOTES:**
1. Optional -FV Flush Valve -Wall Supply
 2. Optional -FV Flush Valve -Top Supply

3. Bariatric Rated Mounting Carrier (By Others)
4. Optional -CN Cap Nuts

⚠ WARNING: Cancer and Reproductive Harm - www.P65Warnings.ca.gov

SELECTION SUMMARY & APPROVAL FOR MANUFACTURING

Model Number & Options _____ Quantity _____
 Company _____ Date _____
 Contact _____ Title _____
 Approval for Manufacturing/Signature _____

All dimensions are nominal and subject to manufacturer's change without notice. Whitehall assumes no responsibility for use of void or suspended data © Whitehall Manufacturing, Member of Morris Group International. Please visit www.whitehallmfg.com for most current specifications.