



## Whitehall Bariatric Tank Toilet

Model WH2125BAR



### Bariatric Tank Toilet

**Tank Toilet** is arranged to be installed on a finished wall from the front side. Unit is fabricated from 14 gage, type 304 stainless steel and is seamless welded construction with exterior surfaces powder coated white (interior of toilet will have a #4 satin finish and will not be powder coated).

Bariatric Tank Toilet includes -HSBJ Big John® hinged toilet seat that is rated at 1,200 lbs.

**Toilet** includes an elongated bowl and is manufactured to comply with ASME A112.19.3 and CSA B45.4 requirements. Toilet uses standard residential size Water Inlet and Waste Outlet. Trap has a minimum 3-1/2" seal, will pass a 2-1/8" ball and is fully enclosed. Floor Waste Outlet locations are offered with 10" or 12" dimension from Back Wall and provided with a 7-1/2" Recessed Gasket Flange.

**Toilet Tank** has a polyethylene inner Liner and flushes with a conventional Fluid Master® float/flapper mechanism utilizing water consumption between 1.28 gallons (4.8 Liters) to 1.6 gallons (6 liters) per flush. Left Hand Flush Button is provided as standard, Right Hand Flush Button (-PBR) is also offered.

### GUIDE SPECIFICATION

Provide and install Whitehall Bariatric Toilet (specify model number). Fixture shall be fabricated from 14 gage, type 304 stainless steel. Construction shall be seamless welded and exterior surfaces are powder coated white. Housing to include side access panels. Toilet shall be an elongated bowl and self-draining flushing rim and include -HSBJ Big John® hinged toilet seat. Toilet shall meet ASME A112.19.3 and CSA B45.4 requirements. Toilet uses standard residential water inlet and waste outlet. Toilet trap shall have a minimum 3-1/2" seal and shall pass a 2-1/8" diameter ball and is fully enclosed. Toilet tank has a polyethylene inner liner and flushes with a conventional Fluid Master® float/flapper mechanism.

Please visit [www.whitehallmfg.com](http://www.whitehallmfg.com)  
for most current specifications.



Recyclable  
Product



Water  
Conserving  
Product

Complies  
with the  
following  
standards:





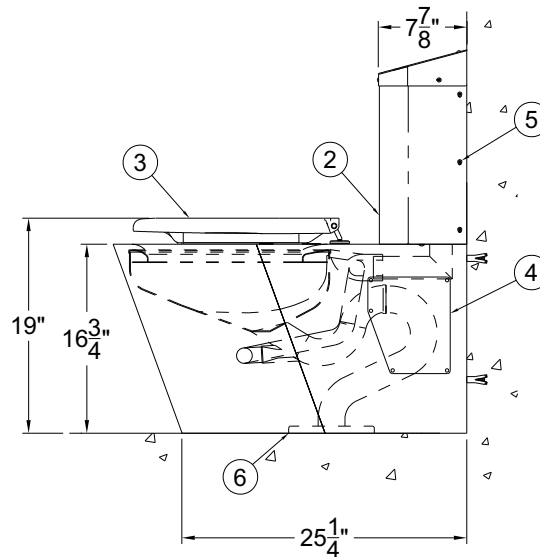
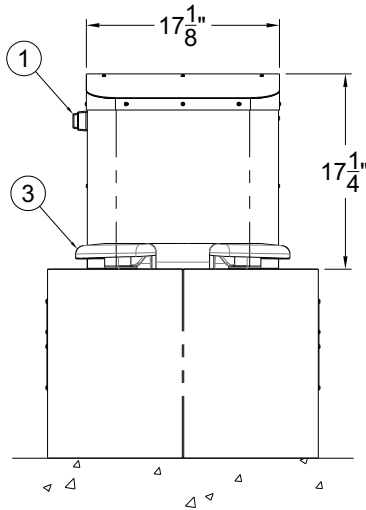
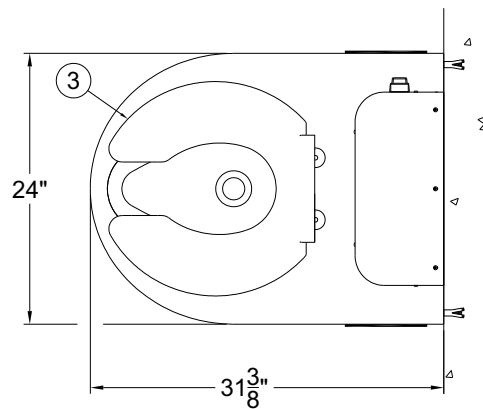
## MODEL AND OPTIONS SELECTION

### BASE MODEL NUMBER

- WH2125BAR\_10 Tank Toilet - L.H. Flush Button (Waste 10" from Wall to the center of Waste Outlet)
- WH2125BAR\_12 Tank Toilet - L.H. Flush Button (Waste 12" from Wall to the center of Waste Outlet)
- WH2125BAR\_10-PBR Tank Toilet - R.H. Flush Button (Waste 10" from Wall to center of Waste Outlet)
- WH2125BAR\_12-PBR Tank Toilet - R.H. Flush Button (Waste 12" from Wall to center of Waste Outlet)

### NOTES:

1. Flush Tank Pushbutton (L.H. Shown, R.H. Opposite)
2. Flush Tank
3. HSBJ Big John Hinged Seat (Provided)
4. Left and Right Access Panels
5. Vandal Resistant Fasteners
6. 7-1/2" Recessed Gasket Flange Waste Outlet (Model # indicates Waste Dimension from Wall)



### DISCLAIMER:

This product is designed to decrease the probability that it may be utilized as an apparatus for ligation. It is not a replacement for professionals who are trained in the proper evaluation, management and supervision of persons at risk of suicide.

**⚠ WARNING: Cancer and Reproductive Harm - [www.P65Warnings.ca.gov](http://www.P65Warnings.ca.gov)**

### SELECTION SUMMARY & APPROVAL FOR MANUFACTURING

Model Number & Options \_\_\_\_\_ Quantity \_\_\_\_\_  
 Company \_\_\_\_\_ Date \_\_\_\_\_  
 Contact \_\_\_\_\_ Title \_\_\_\_\_  
 Approval for Manufacturing/Signature \_\_\_\_\_

All dimensions are nominal and subject to manufacturer's change without notice. Whitehall assumes no responsibility for use of void or superseded data © Whitehall Manufacturing, Member of Morris Group International. Please visit [www.whitehallmfg.com](http://www.whitehallmfg.com) for most current specifications.