



**Whitehall Manufacturing®**  
Manufacturer of Healthcare and Rehabilitation Products since 1946

**BestCare®**  
Patients, Not Prisoners®

**Healthcare and Ligature  
Resistant Products**

Division of  
Acorn Engineering Company®



A MEMBER OF



## Whitehall Ligature Resistant Faucet with Piezo Buttons and Valve

Model WH3373-PPZ  
& WH3374-PPZ



\*\*U.S. DESIGN PATENTED

WH3374-PPZ

Fixture May Show Some Available Options

### Ligature Resistant Faucet

**The Ligature Resistant Faucet** is designed and developed to retrofit existing lavatories or it can be specified for new design. The Ligature Resistant Faucet is arranged to be mounted to the deck of the lavatory. Faucet assembly requires (3) 1-5/16" to 1-1/2" diameter holes on 4" or optional 8" centerset. Conical Faucet is chrome plated brass and provides vandal and suicide resistance.

**Valve** is a Electronic valve with Piezo button(s) which require less than 5 pounds of force to activate valve. Valve is metering with non-hold open feature. Metering valve timing range is 0-100 seconds. Valve includes a 0.7 GPM flow control and can be remotely located up to 10 feet from the operating pushbutton. A 120VAC/9VDC plug-in transformer provided. Batteries are not included.

**Fixture is ADA Compliant.** Unit conforms with ADA requirements for accessibility when installed correctly. Compliance is subject to the interpretation and requirements of the local code authority.

**CONTROLS  
INSIDE**

Please visit [www.whitehallmfg.com](http://www.whitehallmfg.com)  
for most current specifications.



Recyclable  
Product



Water  
Conserving  
Product

Complies  
with the  
following  
standards:



Federal  
Public Law  
111-380  
(No Lead)



Whitehall Mfg. • P.O. Box 3527 • City of Industry, CA 91744 • (800) 782-7706 • (626) 968-6681

**WH3373-PPZ**

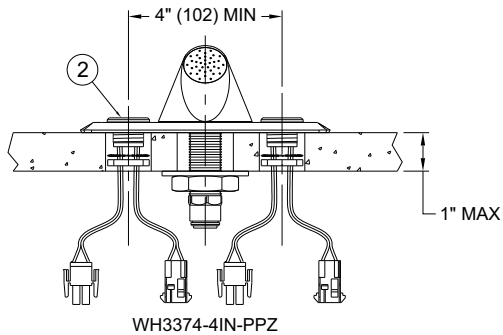
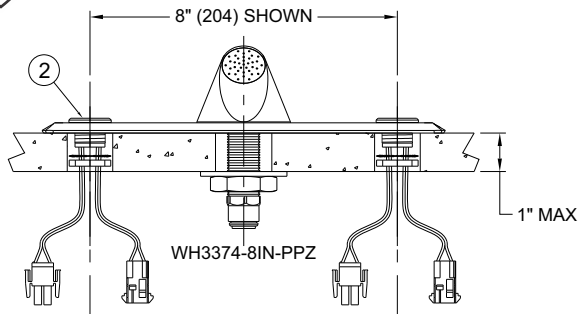
Updated: 09/27/2023



**Whitehall Manufacturing®**  
Manufacturer of Healthcare and Rehabilitation Products since 1946

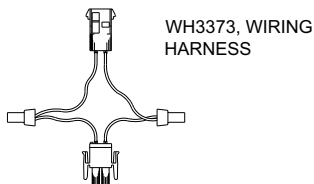
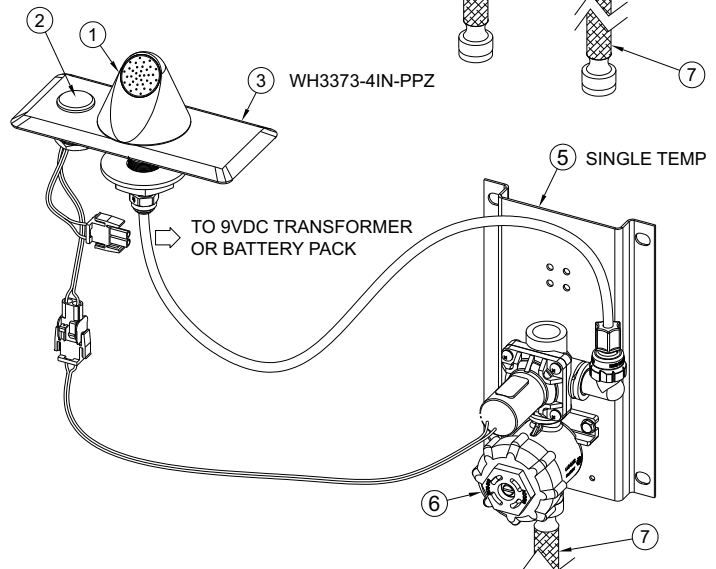
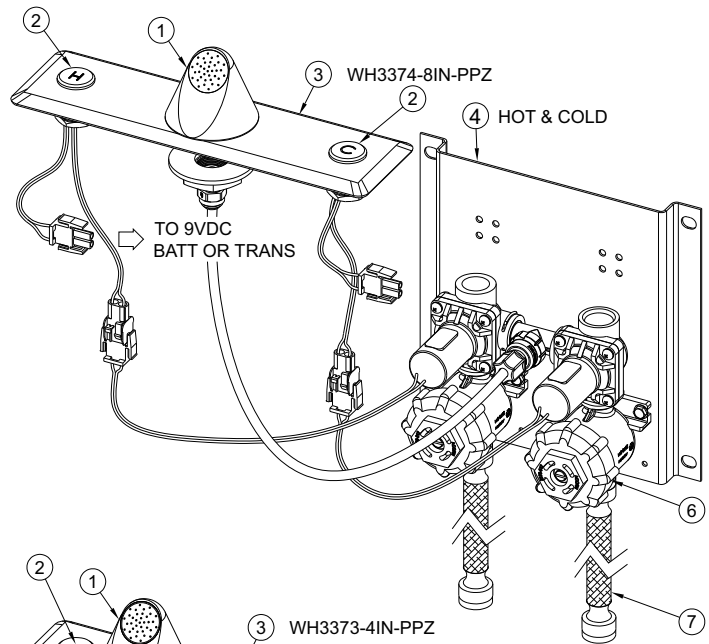
**BestCare®**  
Patients, Not Prisoners®

**Healthcare and Ligature  
Resistant Products**

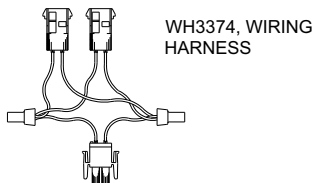


**NOTES:**

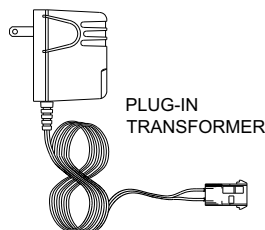
1. CONICAL LIGATURE RESISTANT SPOUT
2. LIGATURE RESISTANT PIEZO BUTTONS
3. ESCUTCHEON PLATE
4. AIR CONTROL VALVE ASSEMBLY, HOT AND COLD
5. AIR CONTROL VALVE ASSEMBLY, SINGLE TEMPERATURE
6. CHIECKSTOP/STRAINER ASSEMBLY
7. 1/2" NPS INLET FLEX HOSE



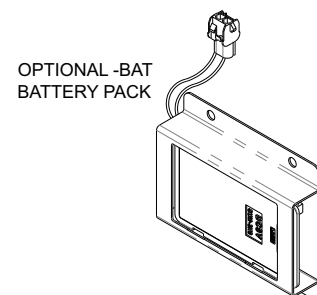
WH3373, WIRING  
HARNESS



WH3374, WIRING  
HARNESS



PLUG-IN  
TRANSFORMER



OPTIONAL -BAT  
BATTERY PACK

Batteries Not Included



**Whitehall Manufacturing®**  
Manufacturer of Healthcare and Rehabilitation Products since 1946

**BestCare®**  
Patients, Not Prisoners®

**Healthcare and Ligature  
Resistant Products**

**MODEL NUMBER AND OPTIONS SELECTION:**

**BASE MODEL NUMBER**

- ☐ WH3373-PPZ      Ligature Resistant Faucet with Electronic Valve and Piezo Button,  
Single Temp. with 4" Centerset
- ☐ WH3373-PPZ-BAT      Ligature Resistant Faucet with Battery Operated Electronic Valve and Piezo Button,  
Single Temp. with 4" Centerset (Batteries not included)
- ☐ WH3374-PPZ      Ligature Resistant Faucet with Electronic Valve and Piezo Buttons,  
Hot & Cold with 4" Centerset
- ☐ WH3374-PPZ-BAT      Ligature Resistant Faucet with Battery Operated Valve and Piezo Buttons,  
Hot & Cold with 4" Centerset (Batteries not included)
- ☐ WH3373-8IN-PPZ      Ligature Resistant Faucet with Electronic Valve and Piezo Button,  
Single Temp. with 8" Centerset
- ☐ WH3373-8IN-PPZ-BAT      Ligature Resistant Faucet with Battery Operated Valve and Piezo Button,  
Single Temp. with 8" Centerset (Batteries not included)
- ☐ WH3374-8IN-PPZ      Ligature Resistant Faucet with Electronic Valve and Piezo Buttons,  
Hot & Cold with 8" Centerset
- ☐ WH3374-8IN-PPZ-BAT      Ligature Resistant Faucet with Battery Operated Valve and Piezo Buttons,  
Hot & Cold with 8" Centerset (Batteries not included)

**OPTIONS:**

- ☐ WHST70-12      ASSE 1070 Compliant Hot & Cold, Temperature / Pressure Balancing Mixing Valve

**DISCLAIMER:**

This product is designed to decrease the probability that it may be utilized as an apparatus for ligature. It is not a replacement for professionals who are trained in the proper evaluation, management and supervision of persons at risk of suicide.

 **WARNING:** Cancer and Reproductive Harm - [www.P65Warnings.ca.gov](http://www.P65Warnings.ca.gov)

**SELECTION SUMMARY & APPROVAL FOR MANUFACTURING**

Model Number & Options \_\_\_\_\_ Quantity \_\_\_\_\_  
Company \_\_\_\_\_ Date \_\_\_\_\_  
Contact \_\_\_\_\_ Title \_\_\_\_\_  
Approval for Manufacturing/Signature \_\_\_\_\_

All dimensions are nominal and subject to manufacturer's change without notice. Whitehall assumes no responsibility for use of void or superseded data. Whitehall Manufacturing®, Member of Morris Group International. Please visit [www.whitehallmfg.com](http://www.whitehallmfg.com) for most current specifications.

**Whitehall Mfg. • P.O. Box 3527 • City of Industry, CA 91744 • (800) 782-7706 • (626) 968-6681**

**WH3373-PPZ**

Updated: 09/27/2023