



**Whitehall Manufacturing®**  
Manufacturer of Healthcare and Rehabilitation Products since 1946

**BestCare®**  
Patients, Not Prisoners®

**Healthcare and Ligature  
Resistant Products**

Division of  
Acorn Engineering Company®

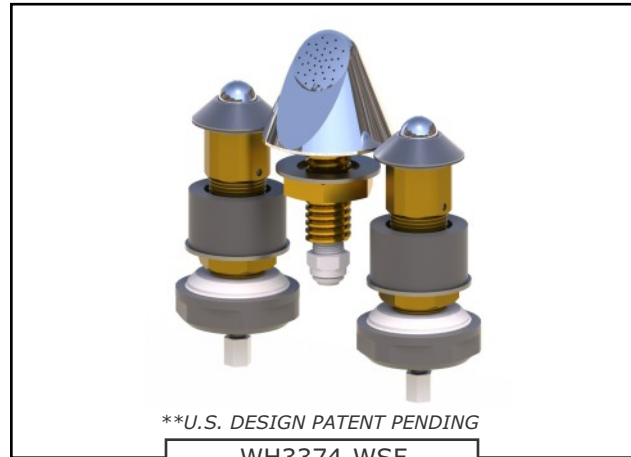


A MEMBER OF



## **Whitehall Ligature Resistant Faucet with pushbuttons and Valve**

Model WH3373-WSF  
& WH3374-WSF



\*\*U.S. DESIGN PATENT PENDING

WH3374-WSF

Fixture May Show Some Available Options

### **Ligature Resistant Faucet**

**The Ligature Resistant Faucet** is designed and developed to retrofit existing lavatories or it can be specified for new design. The Ligature Resistant Faucet is arranged to be mounted to the deck of the lavatory. Faucet assembly requires (3) 1-5/16" to 1-1/2" diameter holes on 6" or 8" centerset. Conical faucet is chrome plated brass and provides vandal and suicide resistance.

**Valve** is an Air-Control pneumatically operated, pushbutton valve using atmospheric air. Hemispherical pushbuttons are vandal-resistant and require less than 5 pounds of force to activate valve. Valve is metering with non-hold open feature. Metering valve timing range is 0-60 seconds. Valve includes a 0.7 GPM flow control and can be remotely located up to 10 feet from the operating pushbutton.

**Fixture is ADA Compliant.** Unit conforms with ADA requirements for accessibility when installed correctly. Compliance is subject to the interpretation and requirements of the local code authority.

### **GUIDE SPECIFICATION**

Provide and install Ligature Resistant Faucet Components (specify model number and options). Faucet valve shall be Air-Control, metering, non-hold open type. Assembly shall include 0.7 GPM flow control, hot and cold hemispherical pushbuttons, pushbutton sleeve and faucet connections.

Please visit [www.whitehallmfg.com](http://www.whitehallmfg.com)  
for most current specifications.



Recyclable  
Product



Water  
Conserving  
Product

Complies  
with the  
following  
standards:



Federal  
Public Law  
111-380  
(No Lead)



Whitehall Mfg. • P.O. Box 3527 • City of Industry, CA 91744 • (800) 782-7706 • (626) 968-6681

**WH3373-WSF**

Updated: 09/07/2023



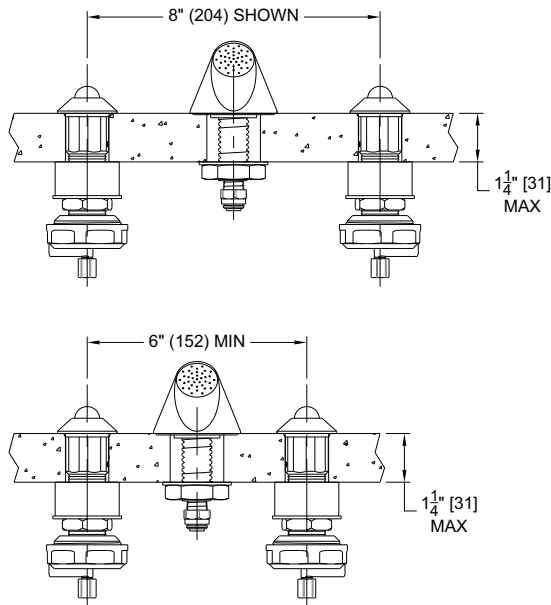
**MODEL NUMBER AND OPTIONS SELECTION:**

**BASE MODEL NUMBER**

- ☐ WH3373-WSF      Ligature Resistant Faucet with Air-Control Valve Assembly, Single Temp  
☐ WH3374-WSF      Ligature Resistant Faucet with Air-Control Valve Assembly, Hot & Cold

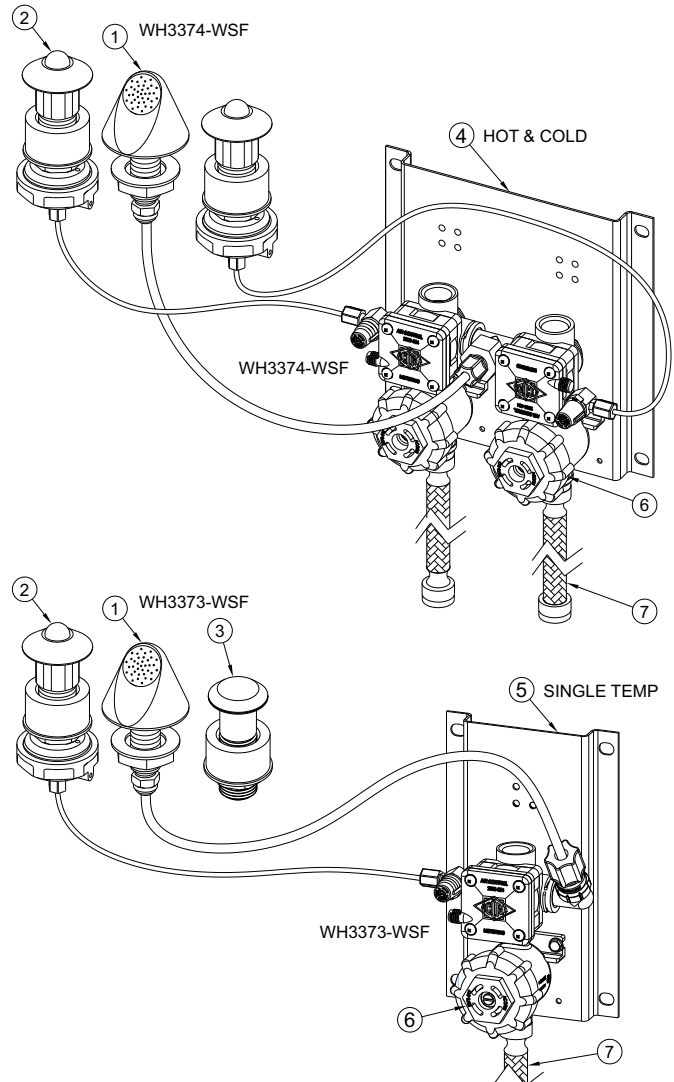
**OPTIONS:**

- ☐ WHST70-12      ASSE 1070 Compliant Hot & Cold, Temperature / Pressure Balancing Mixing Valve



**NOTES:**

1. CONICAL LIGATURE RESISTANT SPOUT
2. LIGATURE RESISTANT PUSHBUTTONS
3. BLANK PUSHBUTTON ESCUTCHEON, SINGLE TEMPERATURE ONLY
4. AIR CONTROL VALVE ASSEMBLY, HOT AND COLD
5. AIR CONTROL VALVE ASSEMBLY, SINGLE TEMPERATURE
6. CHECKSTOP/STRAINER ASSEMBLY
7. 1/2" NPS INLET FLEX HOSE



**DISCLAIMER:**

This product is designed to decrease the probability that it may be utilized as an apparatus for ligature. It is not a replacement for professionals who are trained in the proper evaluation, management and supervision of persons at risk of suicide.

**⚠ WARNING: Cancer and Reproductive Harm - [www.P65Warnings.ca.gov](http://www.P65Warnings.ca.gov)**

**SELECTION SUMMARY & APPROVAL FOR MANUFACTURING**

Model Number & Options \_\_\_\_\_ Quantity \_\_\_\_\_  
Company \_\_\_\_\_ Date \_\_\_\_\_  
Contact \_\_\_\_\_ Title \_\_\_\_\_  
Approval for Manufacturing/Signature \_\_\_\_\_

All dimensions are nominal and subject to manufacturer's change without notice. Whitehall assumes no responsibility for use of void or superseded data. Whitehall Manufacturing®, Member of Morris Group International. Please visit [www.whitehallmfg.com](http://www.whitehallmfg.com) for most current specifications.