



Whitehall Manufacturing®
 Manufacturer of Healthcare and Rehabilitation Products since 1946

BestCare®
 Patients, Not Prisoners®

**Healthcare and Ligature
 Resistant Products**

Division of
 Acorn Engineering Company®



A MEMBER OF



Whitehall Ligature Resistant Faucet with Piezo Buttons and Valve

Model WH3376-PPZ
 & WH3377-PPZ



**U.S. DESIGN PATENTED

WH3377-PPZ

Fixture May Show Some Available Options

Ligature Resistant Faucet

The Ligature Resistant Faucet is designed and developed to retrofit existing lavatories or it can be specified with Whitehall BestCare® ligature resistant lavatories. The Ligature Resistant Faucet is arranged to be mounted to the deck of the lavatory. Faucet assembly requires (3) 1-5/16" to 1-1/2" diameter holes on 4" or optional 8" centerset. Conical faucet is 303 stainless steel and provides vandal and suicide resistance. Includes a 0.35 GPM vandal resistant flow nozzle.

(Note: Nozzle with a 0.5 GPM Flow may be Purchased Separately using P.N. 2998-110-000; Not intended for use with Whitehall® Basins due to incompatible Spray Arc.)

Valve is a Electronic valve with Piezo button(s) which require less than 5 pounds of force to activate valve. Valve is metering with non-hold open feature. Metering valve factory set for 8 second run time and has a timing range of 0-100 seconds. Valve can be remotely located up to 10 feet from the operating pushbutton. 120VAC/9VDC plug-in transformer is provided. Batteries are not included.

Fixture is ADA Compliant. Unit conforms with ADA requirements for accessibility when installed correctly. Compliance is subject to the interpretation and requirements of the local code authority.

Optional WHST70-12 Mixing Valve option delivers tempered water flow by compensating for pressure and temperature fluctuations. Valve is to be field set to 105 Fahrenheit and includes strainers and integral checks. Operating range is 30 to 100 PSI.

GUIDE SPECIFICATION

Provide and install Ligature Resistant Faucet Assembly (specify model number and options). Faucet valve shall be electronic, metering, non-hold open type. Assembly shall include 0.35 GPM vandal resistant flow control nozzle, hot and cold Piezo button and faucet connections.

Please visit www.whitehallmfg.com for most current specifications.



Recyclable
 Product



Water
 Conserving
 Product

Complies
 with the
 following
 standards:



Federal
 Public Law
 111-380
 (No Lead)



**CONTROLS
 INSIDE**

Whitehall Mfg. • P.O. Box 3527 • City of Industry, CA 91744 • (800) 782-7706 • (626) 968-6681

WH3376-PPZ

Updated: 06/06/2024



MODEL NUMBER AND OPTIONS SELECTION:

BASE MODEL NUMBER

(Use The Following For Basins Manufactured By Others)

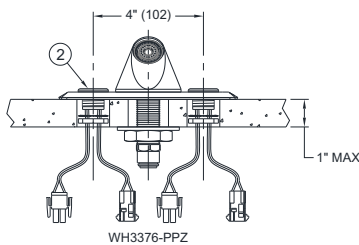
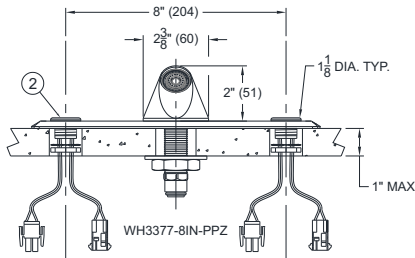
- WH3376-PPZ Faucet with Electronic Valve and Piezo Pushbutton, Single Temp. with 4" Centerset
- WH3376-PPZ-BAT Faucet with Battery Operated Electronic Valve and Piezo Pushbutton, Single Temp. with 4" Centerset (Batteries Not Included)
- WH3377-PPZ Faucet with Electronic Valve and Piezo Pushbuttons, Hot & Cold with 4" Centerset
- WH3377-PPZ-BAT Faucet with Battery Operated Valve and Piezo Pushbutton, Hot & Cold with 4" Centerset (Batteries Not Included)
- WH3376-8IN-PPZ Faucet with Electronic Valve and Piezo Pushbutton, Single Temp. with 8" Centerset
- WH3376-8IN-PPZ-BAT Faucet with Battery Operated Valve and Piezo Pushbutton, Single Temp. with 8" Centerset (Batteries Not Included)
- WH3377-8IN-PPZ Faucet with Electronic Valve and Piezo Pushbuttons, Hot & Cold with 8" Centerset
- WH3377-8IN-PPZ-BAT Faucet with Battery Operated Valve and Piezo Pushbutton, Hot & Cold with 8" Centerset (Batteries Not Included)

(Use The Following For Whitehall BestCare® Basins)

- WH3376L-PPZ Faucet with Electronic Valve and Piezo Pushbutton, Single Temp. with 4" Centerset
- WH3376L-PPZ-BAT Faucet with Battery Operated Electronic Valve and Piezo Pushbutton, Single Temp. with 4" Centerset (Batteries Not Included)
- WH3377L-PPZ Faucet Electronic Valve and Piezo Pushbuttons, Hot & Cold with 4" Centerset
- WH3377L-PPZ-BAT Faucet with Battery Operated Valve and Piezo Pushbutton, Hot and Cold with 4" Centerset (Batteries Not Included)

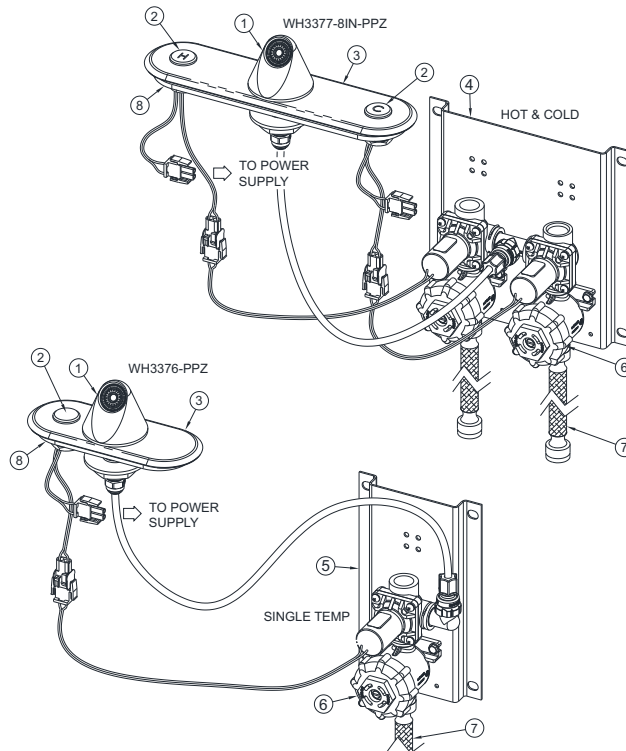
OPTIONS:

- WHST70-12 ASSE 1070 Compliant Hot & Cold, Temperature / Pressure Balancing Mixing Valve



NOTES:

1. CONICAL LIGATURE RESISTANT SPOUT WITH A 0.35 GPM VANDEL RESISTANT NOZZLE
2. LIGATURE RESISTANT PIEZO PUSHBUTTONS
3. ESCUTCHEON PLATE
4. AIR-CONTROL VALVE ASSEMBLY, HOT AND COLD
5. AIR-CONTROL VALVE ASSEMBLY, SINGLE TEMPERATURE
6. CHECKSTOP/STRAINER ASSEMBLY
7. 1/2" NPS INLET FLEX HOSE
8. GASKET



DISCLAIMER:

This product is designed to decrease the probability that it may be utilized as an apparatus for ligature. It is not a replacement for professionals who are trained in the proper evaluation, management and supervision of persons at risk of suicide.

⚠ WARNING: Cancer and Reproductive Harm - www.P65Warnings.ca.gov

SELECTION SUMMARY & APPROVAL FOR MANUFACTURING

Model Number & Options _____ Quantity _____
 Company _____ Date _____
 Contact _____ Title _____
 Approval for Manufacturing/Signature _____

All dimensions are nominal and subject to manufacturer's change without notice. Whitehall assumes no responsibility for use of void or superseded data. Whitehall Manufacturing®, Member of Morris Group International. Please visit www.whitehallmfg.com for most current specifications.