



Infection HIDES EVERYWHERE



Wash your hands one more time.



Whitehall Manufacturing

Manufacturer of Healthcare and Rehabilitation Products since 1946

Introducing the Infection Prevention Sink System with the DEEP SCRUB solution.



Optional, easy to install trap cover.

Cast solid-surface material that has been infused with SteriTouch®, which reduces the growth of odorous bacteria and mold.

SteriTouch®

Optional sensor operated or wrist blade handle operated faucet.

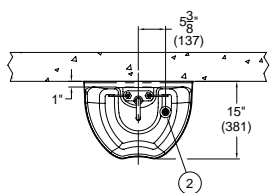
Optional, foot pedals on standard model.



Allows the user to scrub up to their elbows.

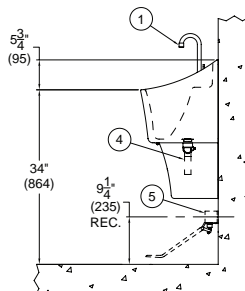
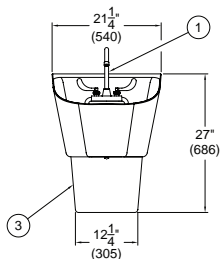
SteriTouch® and SteriTouch® logo are registered trademarks of SteriTouch Limited.

STANDARD SINK SYSTEM - 4150

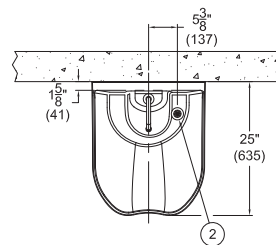


NOTES:

1. Optional -CSG Wrist Blade Gooseneck Faucet Shown. N/A With Optional -VF.
2. Daisy Pattern Grid Strainer
3. Optional -TE Trap Enclosure
4. 1-1/4\" NPSE Grid Strainer w/ Close Elbow And 1-1/4\" O.D. Tailpiece Provided
5. Optional -VF Foot Operated Valve, Shown For Reference Only. N/A With -CSG Faucet Shown.

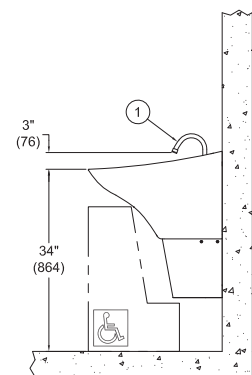
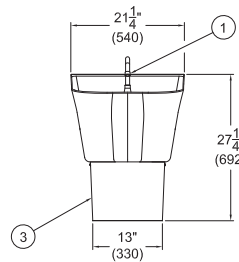


ADA SINK SYSTEM - 4151

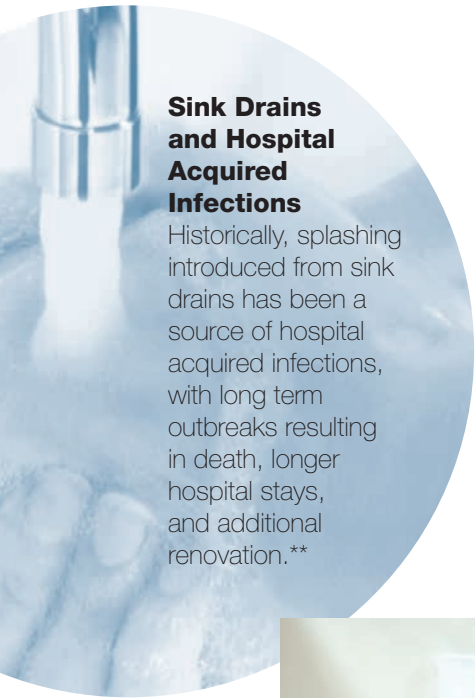


NOTES:

1. Optional -SO Sensor Gooseneck Faucet
2. Daisy Pattern Strainer
3. Optional -TE Trap Enclosure



MODEL# 4151

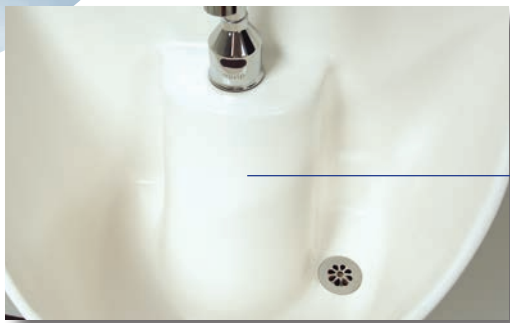


Sink Drains and Hospital Acquired Infections

Historically, splashing introduced from sink drains has been a source of hospital acquired infections, with long term outbreaks resulting in death, longer hospital stays, and additional renovation.**

Handwashing is one of the most powerful tools in the fight against the spread of infection.

It is estimated that 100,000 people die from hospital-acquired infections each year. According to the United Nations Health Agency, hundreds of millions of infections could be prevented if health-care professionals, patients and their families wash their hands with alcohol-based rub or soap and water before and after touching patients and their surroundings. When done regularly by food handlers, handwashing can also prevent the spread of foodborne illness. Whitehall's Infection Prevention Sink has features that assist healthcare workers, patients, and food handlers with proper handwashing and reduce the spread of bacteria.*



Internal slope defuses water flow, minimizing splash.

Offset drain prevents water from being dispensed directly into the drain, discouraging bacteria in the drain from entering the sink basin via splashing.



Thin outside rim is angled downward to discourage users from placing objects on it, reducing the chance of introducing new bacteria.

Front contour fits the body contour better during hand washing.



4" center set faucet



Foot Valve



Hands-free faucet

- Different center sizing for faucets – specify a single hands-free option, a 4" center type faucet or provide your own faucet.
- There are (3) different faucet options:
 - 4" Center Set
 - Hands Free (new photo)
 - Foot valves on non ADA only
- Standard and ADA models available.
- Easy to install
- Patented

BIM DRAWINGS AVAILABLE ON OUR WEBSITE



ADA COMPLIANT DESIGN





Prevention...giving confidence to an infection-free environment.

*Source: <http://www.un.org/apps/news/story.asp?NewsID=44830#.VPccovnf98M>

**Source: <http://www.ncbi.nlm.nih.gov/pubmed/19046054>



Look for the Symbol in Constructive Healthcare



Whitehall Manufacturing
Manufacturer of Healthcare and Rehabilitation Products since 1946

CONTACT US:

Phone Number:

Tel: (800) 782-7706 or (626) 968-6681

Fax: (626) 855-4862

Email: info@whitehallmfg.com

www.whitehallmfg.com

Street Address:

15125 Proctor Avenue

City of Industry, CA 91746 USA

Mailing Address:

P.O. Box 3527

City of Industry, CA 91744 USA

